

AT-T23-Series

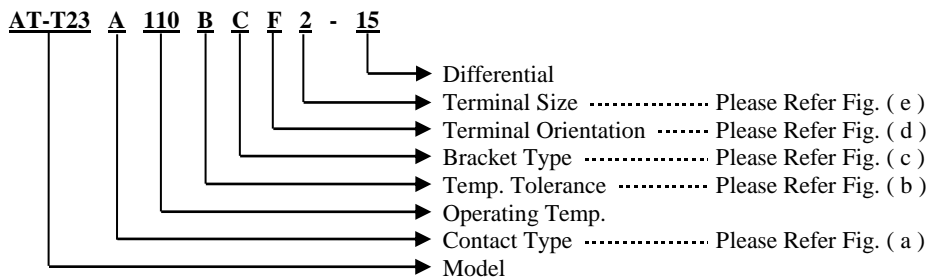
SPECIFICATION

- Electrical Rating : 15A 125V AC (Resistive Load)
10A 250V AC (Resistive Load)
16A 250V AC (Resistive Load)
- Operating Temp. : 50 ~ 175°C (UL / cUL 205°C)
- Differential : 10 ~ 30K (15K Standard)
- Temp. Tolerance : Operating Temp. ± 3K ±5K
- Heat Durability : 220°C Max. (PPS)
- Circuit Resistance : 50mΩ Max.
- Insulation Resistance : 100MΩ Min. at DC 500V
- Dielectric Strength : AC 1000V for One Minute.
Or AC 1800V for One Second.
- Operating Life : 100.000 Cycles (15A 125V / 10A 250V AC)
10.000 Cycles (16A 250V AC)
- Weight : 4,6g Max.



HOW TO ORDER

ORDER CODE (FULL CODE)



(a) CONTACT TYPE :

A = Contact Opens When Temperature Rises to Set Point (Normally Closed)



B = Contact Closes When Temperature Rises to Set Point (Normally Open)



M = Manual Reset

(b) TEMP. TOLERANCE : (* = STANDARD)

Grade	A	*B
Action ± °C	3	5
Reset ± °C	4	8

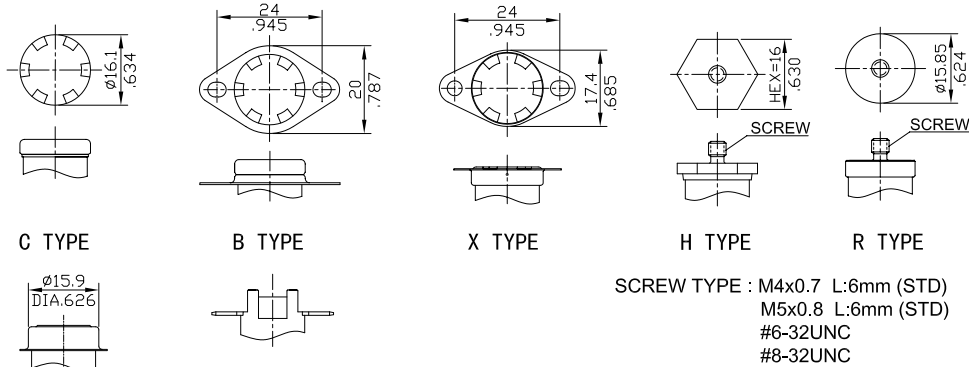
• The Grade of Temp. Tolerance is "A", When The Operating Temp. is Less Than 105°C.

• The Grade of Temp. Tolerance is "B", When The Operating Temp. is Over 106°C.

(c) BRACKET TYPE :

• FIXED BRACKET

* STAINLESS STEEL CAP : D TYPE



SCREW TYPE : M4x0.7 L:6mm (STD)
M5x0.8 L:6mm (STD)
#6-32UNC
#8-32UNC

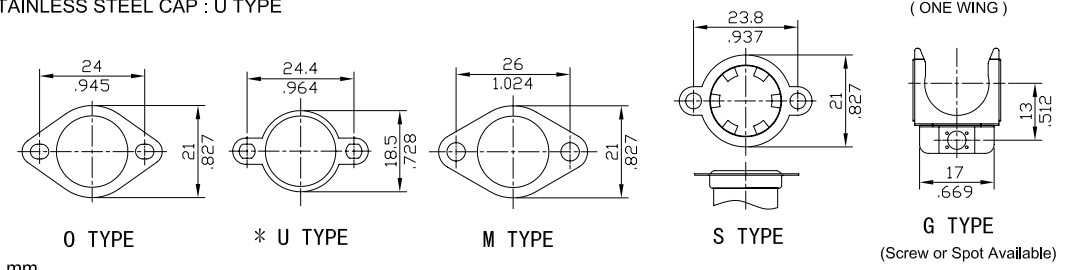
$\frac{\text{mm}}{\text{inch}}$ * D TYPE

(4 POSTS SHELL)

One Shot is suitable for all shapes above.

• LOOSE BRACKET

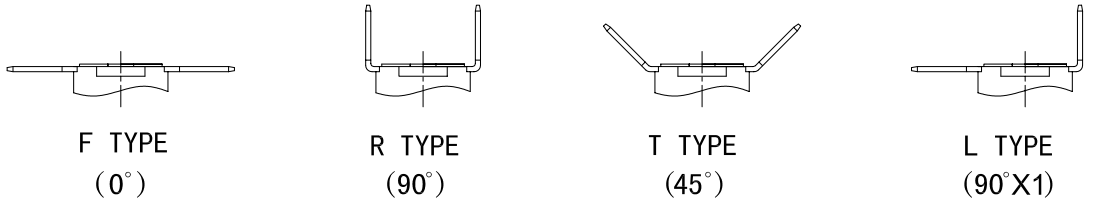
* STAINLESS STEEL CAP : U TYPE



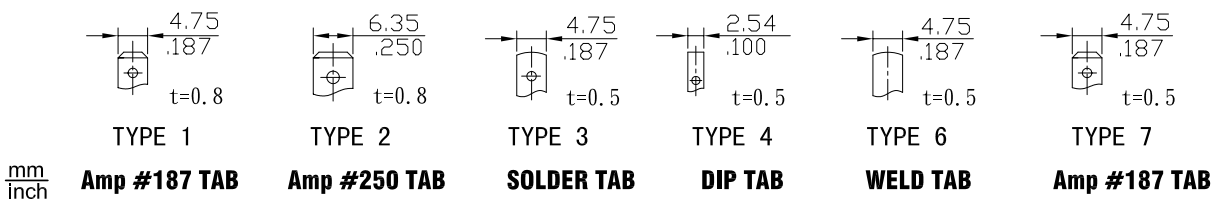
$\frac{\text{mm}}{\text{inch}}$

(Screw or Spot Available)

(d) TERMINAL ORIENTATION :



(e) TERMINAL SIZE :



$\frac{\text{mm}}{\text{inch}}$

Amp #187 TAB Amp #250 TAB SOLDER TAB DIP TAB WELD TAB Amp #187 TAB

Examples of the specification of the AT-T23-Series

Changes and errors excepted

01 / 2016

Alpha Therm GmbH	Gewerbering 7	68723 Plankstadt
Tel: +49 (0) 6202 / 575688 - 0		Fax: +49 (0) 6202 / 575688 - 10
E-Mail: sales@alpha-therm.de		Web: www.alpha-therm.com