



SPECIFICATIONS

RATING : 2A/36VDC
ELECTRICAL LIFE : 200,000 make-and-break cycles at full load
MECHANICAL LIFE : 1,000,000 cycles
INSULATION RESISTANCE : 1,000 MΩ min. at 500VDC
DIELECTRIC STRENGTH : 2,000V RMS @ sea level
CONTACT RESISTANCE : 50 mΩ max.
OPERATION TEMPERATURE : -20°C~+70°C
TRAVEL: About 2.0±0.20mm
OPERATION PRESSURE : 4.5N±1.5N
INGRESS PROTECTION : IP67
TORQUE : 11.5 kgf · cm
THICKNESS : 8.0mm (Max.)
Current limiting resistor is required to limit LED forward current to 20mA.

MATERIALS

BUSHING : Aluminum alloy
BASE : PBT (Blue UL 94-V0)
ACTUATOR : PC (Translucent UL 94-V2)
CAP : Aluminum alloy
SPRING : Steel.
SEALING : Silicone (Translucent).
O-Ring : Silicone (Translucent).
TERMINAL : Brass ,Gold plated.
CONTACT : Silver alloy.
HEX NUT : Brass (Nickel plated).

HOW TO ORDER

IP 67
 ACCORDING TO
 EN 60529:1991+A1:2001
 IEC 60529:2001



MODEL NO. BODY TYPE BUTTON TYPE LIGHT TYPE LED COLOR TERMINAL SHAPE TERMINAL PLATING LED VOLTAGE

MPB16 — [] — [] — [] — [] — [] — [R] — [] [V]

Body type
CA AL alloy (Natural Anodized)
CB AL alloy (Black Anodized)

Button type
R Round

Light type
E Ring
P Power logo

Terminal shape
J Solder Terminal
T1 Flying lead terminal
 L=500mm

Terminal plating
R Gold flash

Accessories

Resistance (About LED Voltage)	
0	Without Resistance
3V	LED input 3 VDC
6V	LED input 6 VDC
12V	LED input 12 VDC
24V	LED input 24 VDC

LED color

ITEM NO	COLOR
0	Without LED
1	White
3	Red
5	Yellow
6	Green
7	Blue

EXAMPLE:

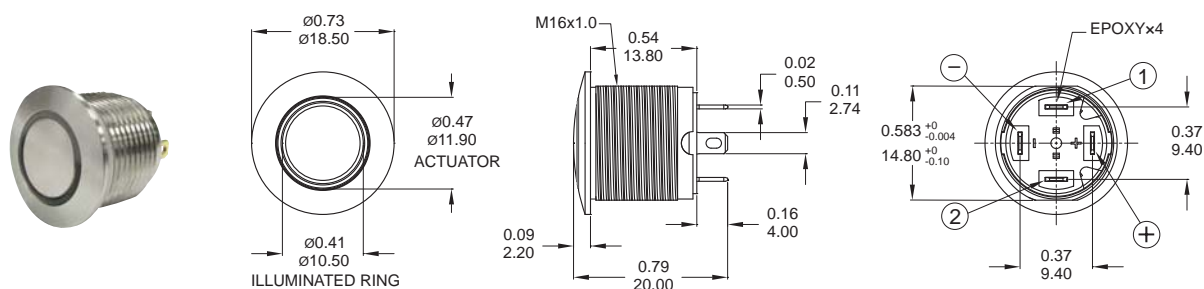
MPB16-CARE-0-JR-0 (Without LED)

MPB16-CARE-6-JR-3V

LED color LED voltage

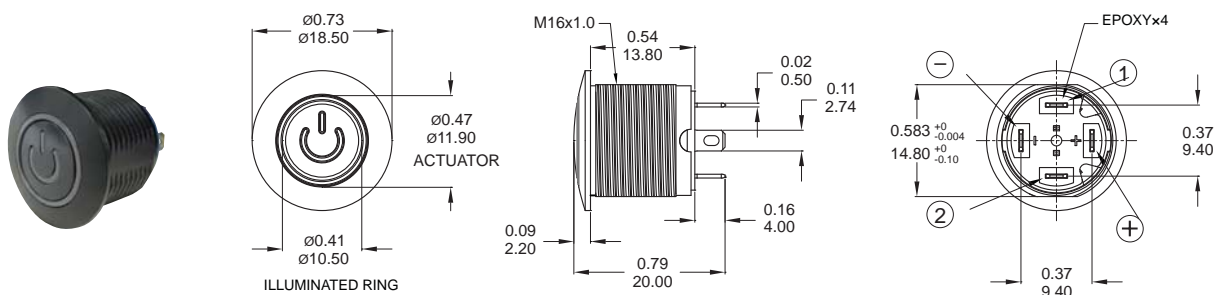
DIMENSION

E Ring (Fixed)



Part No. Shown : MPB16-CARE-□-JR-0

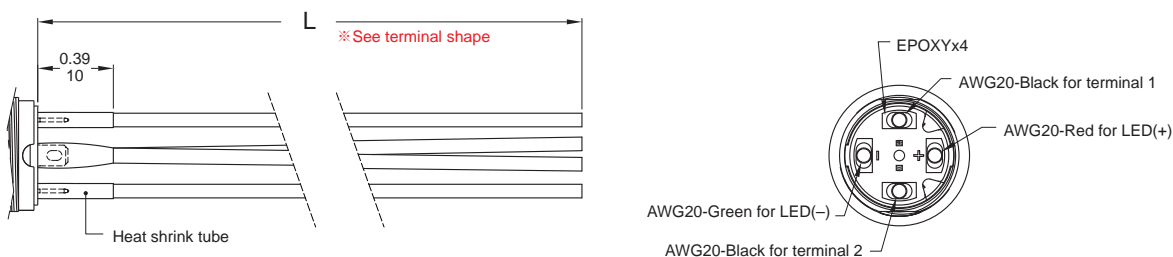
P Power logo



Part No. Shown : MPB16-CBRP-□-JR-0

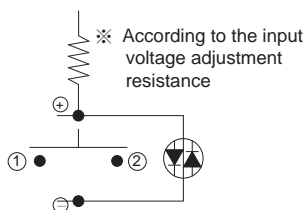
Wire (Flying lead Terminals)

※ Wire=Multi-wire lead AWG20,section 0.6mm²,UL approved (Black / Red / Green)

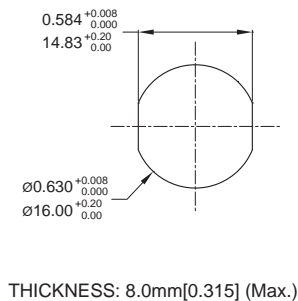


SCHEMATIC / PANEL CUTOUT / HARDWARE

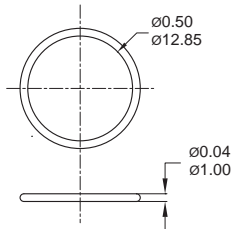
SCHEMATIC



PANEL CUTOUT



O-RING



M16 NUT

