

## SPECIFICATIONS

**CONTACT RATING:** Dependent upon contact material See Page 85.

**MECHANICAL LIFE:** 30,000 make-and-break cycles.

**CONTACT RESISTANCE:** 10 mΩ max. initial @ 2-4VDC  
100mA for both silver and gold plated contacts.

**INSULATION RESISTANCE:** 1,000 MΩ min.

**DIELECTRIC STRENGTH:** 1,000 Vrms min. @sea level.

**OPERATING TEMPERATURE:** -40°C to 85°C.

## MATERIALS

**CASE:** Diallyl phthalate (DAP) (UL94v-0).

**HOUSING:** Stainless Steel.

**ACTUATOR:** Nylon, black std.

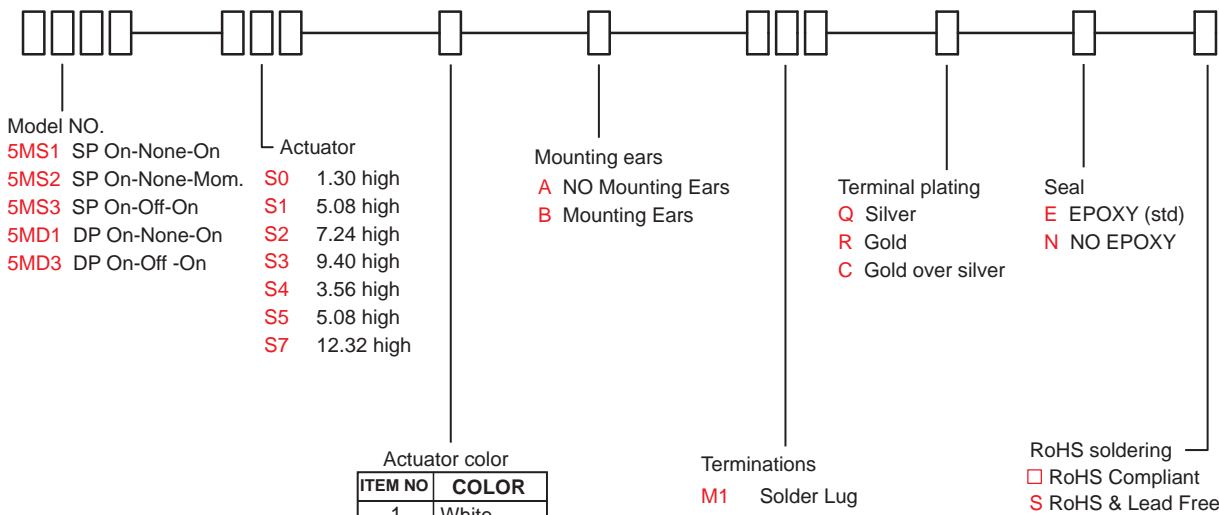
**CONTACT/TERMINALS:** Copper alloy, with silver or gold plated.

**TERMINAL SEAL:** Epoxy.



## HOW TO ORDER

MODEL NO.    ACTUATOR    ACTUATOR COLOR    MOUNTING EARS    TERMINATIONS    TERMINAL PLATING    SEAL    RoHS SOLDERING



Actuator color

ITEM NO	COLOR
1	White
2	Black (Std)
3	Red
4	Orange
5	Yellow
6	Green
7	Blue
8	Brown
9	Gray

\* Besides standard color, other colors need to check stocks available.



# 5M Series

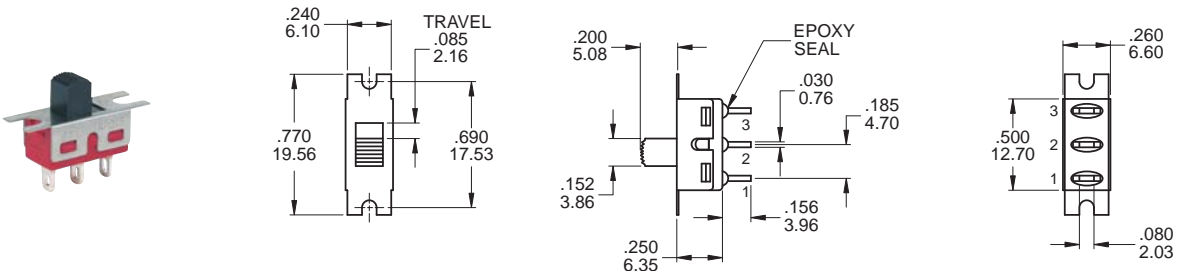
Slide Switches

## SWITCH FUNCTION

NO. POLES	UL/CSA MODEL NO.	MODEL NO.	SWITCH FUNCTION			CONNECTED TERMINALS / SCHEMATIC		
			POS.1	POS.2	POS.3	POS.1	POS.2	POS.3
SP	Q1511	5MS1	ON	NONE	ON	2-1	N/A	2-3
	Q1512	5MS2	ON	NONE	MOM	2 (COMM) 1 • 3	OPEN	2 (COMM) 1 • 3
	Q1513	5MS3	ON	OFF	ON	2 (COMM) 1 • 3		2 (COMM) 1 • 3
DP	Q1521	5MD1	ON	NONE	ON	2-1,5-4	N/A	2-3,5-6
	Q1523	5MD3	ON	OFF	ON	2 (COMM) 1 • 3    5 • 6	OPEN	2 (COMM) 1 • 3    5 • 6

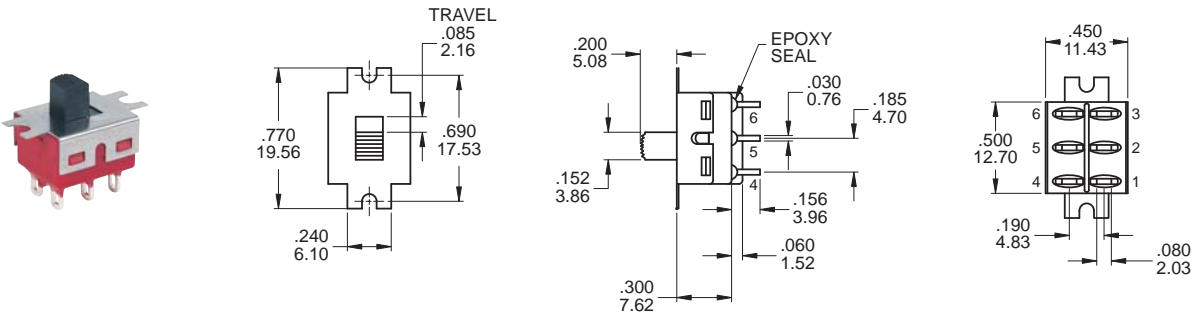
MOM=MOMENTARY

## POLE OPTIONS



### SPDT

Part No. Shown : 5MS1S102BM1QE

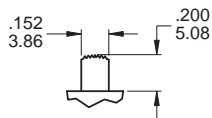


### DPDT

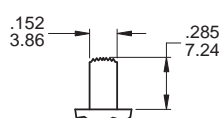
Part No. Shown : 5MD1S102BM1QE

## ACTUATOR OPTIONS

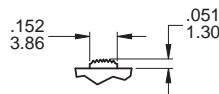
### S1 STD



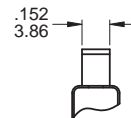
### S2



### S0 Only for S1,S2,D1,D3 model type

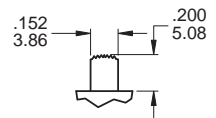


### FRONT

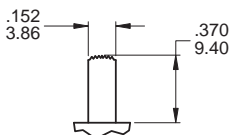


For S0,S1,S2,S3,S4 actuator

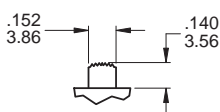
### ▲ S5 Only DPDT



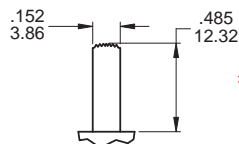
### S3



### S4

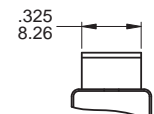


### S7



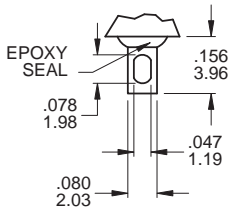
\* Subtract .014(0.36) from Actuator height for M6, M7 P.C. mounting option.

### FRONT



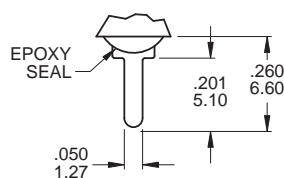
## TERMINATION OPTIONS

**M1** Solder lug



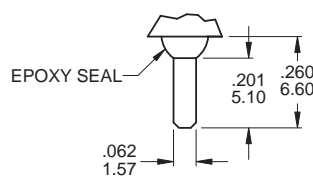
.030(0.76) THK.

**M2** PC Thru-hole



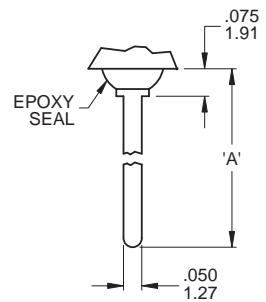
.030(0.76) THK.

**M3** Quick connect



THK .030(0.76)

**M5** Wire Wrap



THK .030(0.76)

## OTHER TERMINATION OPTIONS

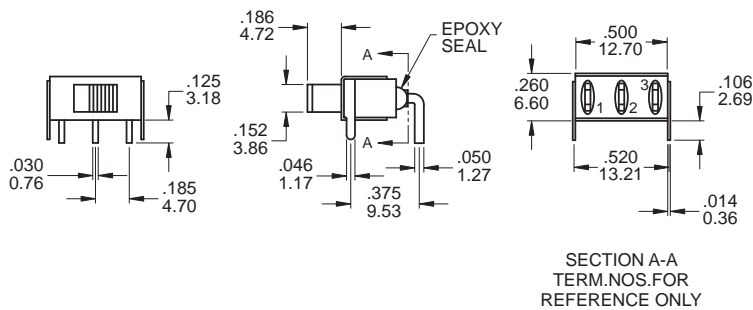
**M6** Right angle P.C. Mount

**M7** Right angle P.C. Mount

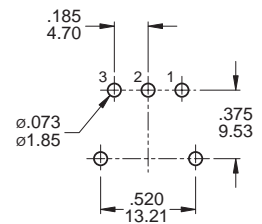
**VS2** Vertical bracket P.C. Mount

OPTION CODE	DIM. 'A'
M51	.736 (18.70)
M52	.953 (24.20)
M53	.415 (10.55)
M54	1.062 (26.97)

**M6**



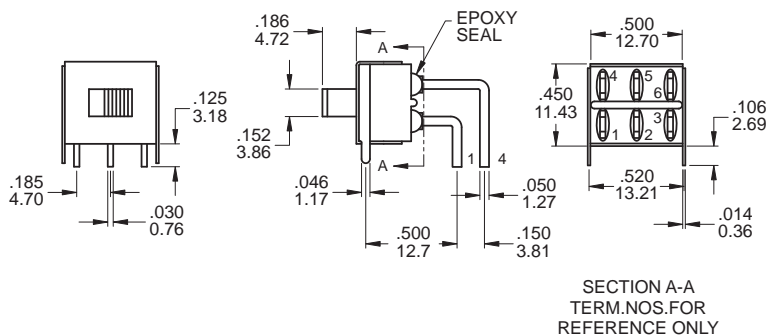
P.C. MOUNTING



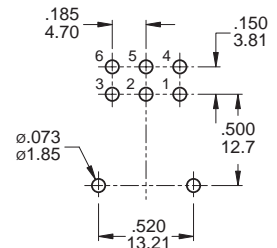
**SPDT**

Part No. Shown : 5MS1S102AM6QE

**M6**



P.C. MOUNTING



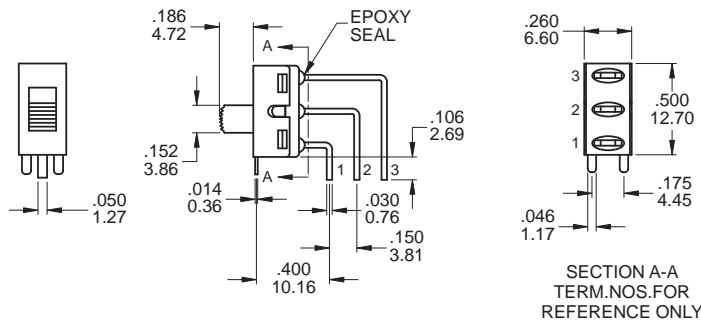
**DPDT**

Part No. Shown : 5MD1S102AM6QE

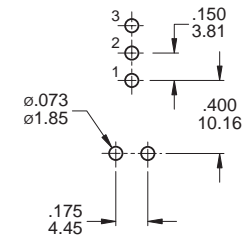
# 5M Series

Slide Switches

M7



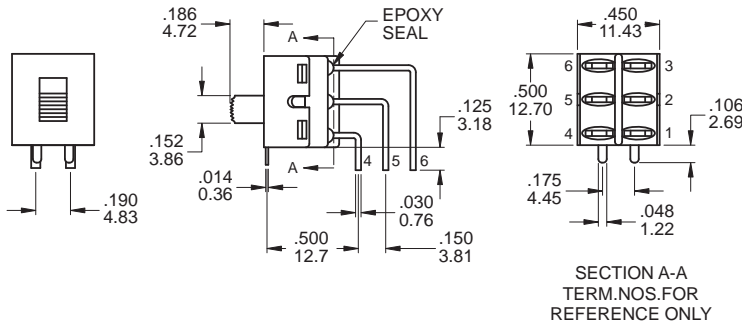
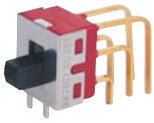
P.C. MOUNTING



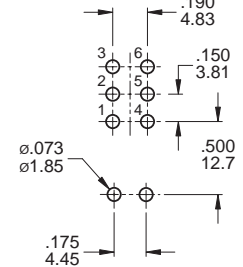
SPDT

Part No. Shown : 5MS1S102AM7QE

M7



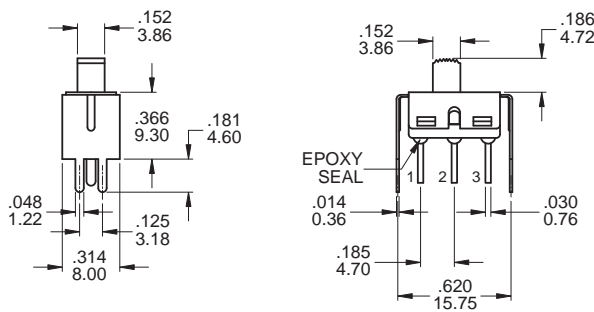
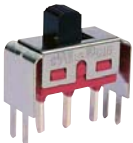
P.C. MOUNTING



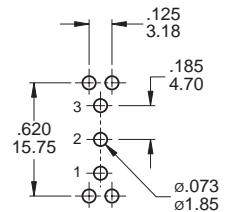
DPDT

Part No. Shown : 5MD1S102AM7RE

VS2



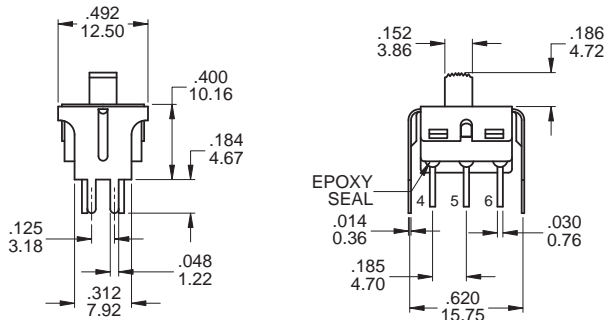
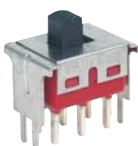
P.C. MOUNTING



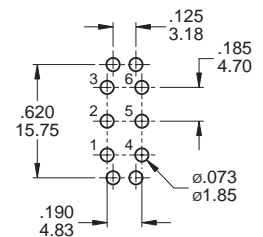
SPDT

Part No. Shown : 5MS1S102AVS2QE

VS2



P.C. MOUNTING



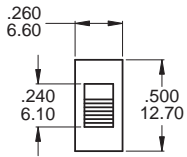
DPDT

Part No. Shown : 5MD1S102AVS2QE

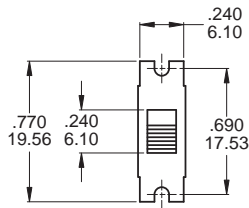
**MOUNTING EARS / PANEL MOUNT**

**MOUNTING EARS**

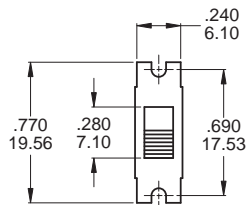
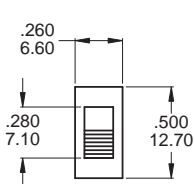
"A" WITHOUT MOUNTING EARS



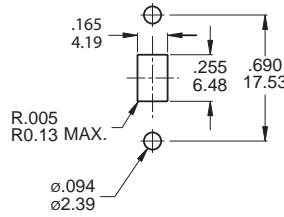
"B" WITH MOUNTING EARS



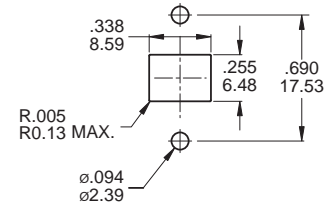
**THREE POSITIONS ONLY**



**PANEL MOUNTING**

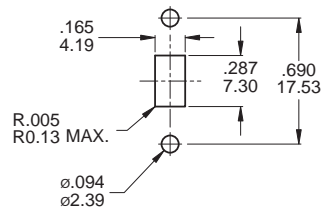


For S0,S1,S2,S3,S4 actuator



For S5 actuator only

**THREE POSITIONS ONLY**



For S0,S1,S2,S3,S4 actuator

**CONTACT MATERIAL OPTIONS**

	CONTACT PLATING	TERMINAL PLATING	RATINGS
<b>Q</b>	Silver	Q = Silver	5 Amps with resistant load @ 120VAC or 28VDC 2 Amps with resistant load @ 250VAC
<b>C</b>	Gold over Silver	C = Gold over silver	
<b>R</b>	Gold	R = Gold	0.4 Volt - Amps ( VA ) max. @ 20V max. ( AC or DC )

**SOLDERING PROCESSES**

**MANUAL SOLDERING :** Use soldering iron of 30 watts, controlled at 350°C approximately 5 seconds while applying solder.

**WAVE SOLDERING :** Recommended Soldering Temperature : 270 ± 5°C

Duration of Solder Immersion : Max 5sec. (PCB is 1.6mm in thickness)

