

SPECIFICATIONS

- CONTACT RATING:** Dependent upon contact material.
- MECHANICAL LIFE:** 30,000 make-and-break cycles.
- CONTACT RESISTANCE:** 10 mΩ max. initial @ 2-4VDC
100mA for both silver and gold plated contacts.
- INSULATION RESISTANCE:** 1,000 MΩ min.
- DIELECTRIC STRENGTH:** 1,000 Vrms min. @sea level.
- OPERATING TEMPERATURE:** -30°C to 85°C.

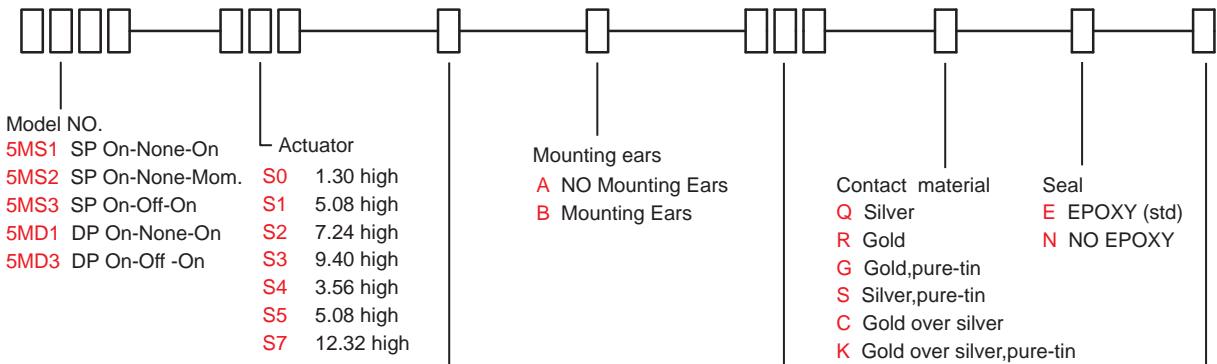
MATERIALS

- CASE:** Diallyl phthalate (DAP) (UL94v-0).
- HOUSING:** Stainless Steel.
- ACTUATOR:** Nylon, black std.
- CONTACT:** Brass, with silver or gold plated.
- TERMINAL SEAL:** Epoxy.



HOW TO ORDER

MODEL NO. ACTUATOR ACTUATOR COLOR MOUNTING EARS TERMINATIONS CONTACT MATERIAL SEAL RoHS SOLDERING



Actuator color

ITEM NO	COLOR
1	White
2	Black (Std)
3	Red
4	Orange
5	Yellow
6	Green
7	Blue
8	Brown
9	Gray

* Besides standard color, other colors need to check stocks available.

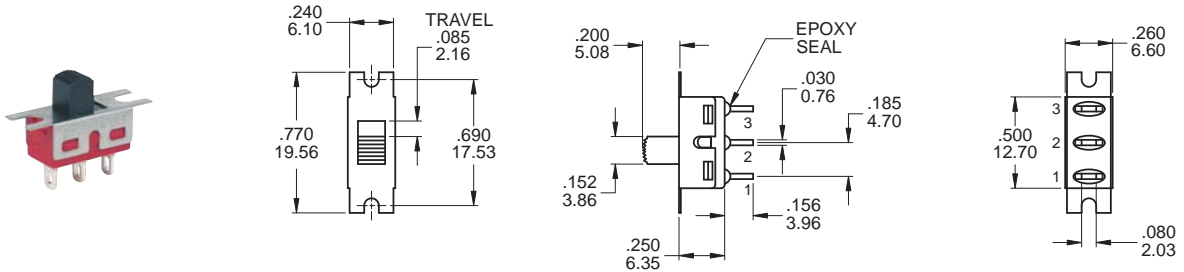
- Terminations
- M1** Solder Lug
 - M2** PC thru-hole
 - M3** Quick Connect
 - M5-1** 18.70 high, wire wrap
 - M5-2** 24.20 high, wire wrap
 - M5-3** 10.55 high, wire wrap
 - M5-4** 26.97 high, wire wrap
 - M6** Right angle, PC thru-hole
 - M7** Vertical right angle, PC thru-hole
 - VS2** V-bracket
- RoHS soldering
- Rohs Compliant
 - S** Rohs & Lead Free
 - F** Halogen Free+RoHS

SWITCH FUNCTION

NO. POLES	UL/CSA MODEL NO.	MODEL NO.	SWITCH FUNCTION			CONNECTED TERMINALS / SCHEMATIC		
			POS.1	POS.2	POS.3	POS.1	POS.2	POS.3
SP	Q1511	5MS1	ON	NONE	ON	2-1	N/A	2-3
	Q1512	5MS2	ON	NONE	MOM	2 (COMM)	OPEN	2 (COMM)
	Q1513	5MS3	ON	OFF	ON	1-3		1-3
DP	Q1521	5MD1	ON	NONE	ON	2-1,5-4	N/A	2-3,5-6
	Q1523	5MD3	ON	OFF	ON	2 (COMM) 5-6	OPEN	2 (COMM) 4-6

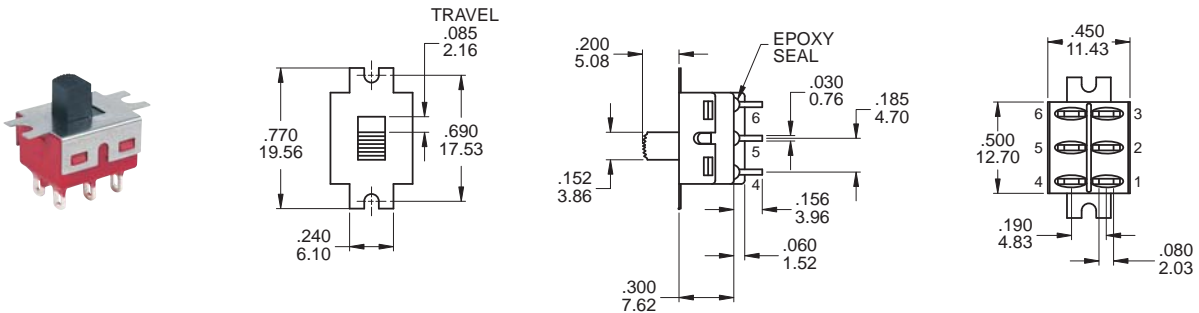
MOM=MOMENTARY

POLE OPTIONS



SPDT

Part No. Shown : 5MS1S102BM1QE

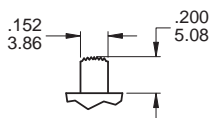


DPDT

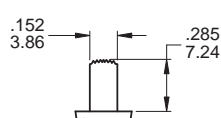
Part No. Shown : 5MD1S102BM1QE

ACTUATOR OPTIONS

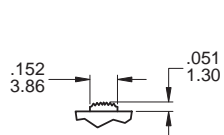
S1 STD



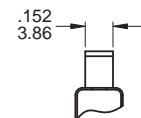
S2



S0

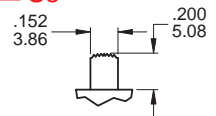


FRONT

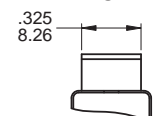


For S0,S1,S2,S3,S4

S5

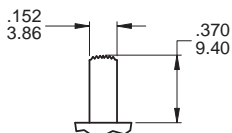


FRONT

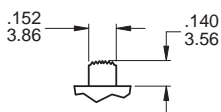


FOR DPDT ONLY

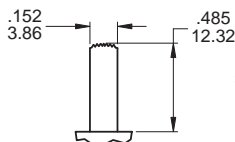
S3



S4



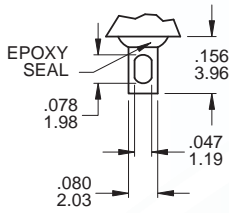
S7



* Subtract .014(0.36) from Actuator height for M6, M7 P.C. MOUNTING OPTION.

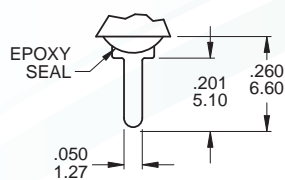
TERMINATION OPTIONS

M1 Solder lug



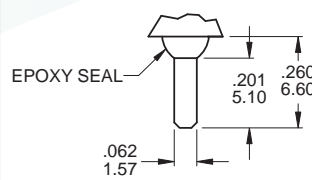
.030(0.76) THK.

M2 PC Thru-hole



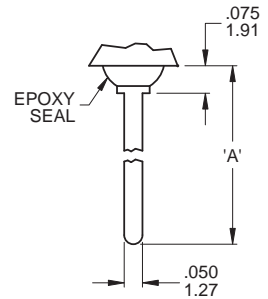
.030(0.76) THK.

M3 Quick connect



THK .030(0.76)

M5 Wire Wrap



THK .030(0.76)

OTHER TERMINATION OPTIONS

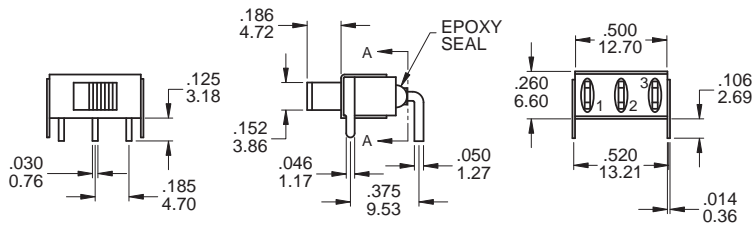
M6 RIGHT ANGLE P.C. MOUNT

M7 RIGHT ANGLE P.C. MOUNT

VS2 VERTICAL BRACKET P.C. MOUNT

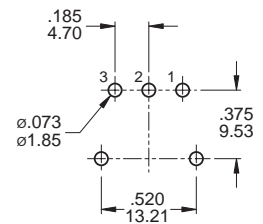
OPTION CODE	DIM. 'A'
M5-1	.736 (18.70)
M5-2	.953 (24.20)
M5-3	.415 (10.55)
M5-4	1.062 (26.97)

M6



SECTION A-A
TERM.NOS.FOR
REFERENCE ONLY

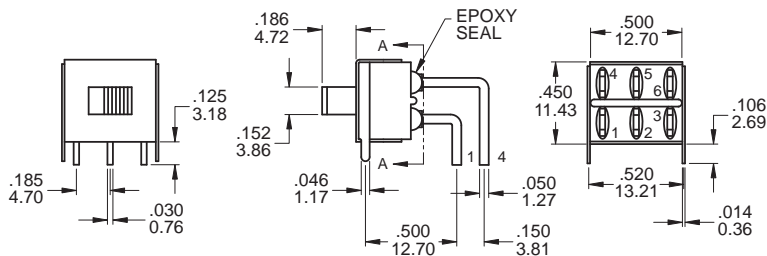
P.C. MOUNTING



SPDT

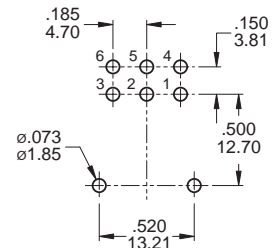
Part No. Shown : 5MS1S102AM6QE

M6



SECTION A-A
TERM.NOS.FOR
REFERENCE ONLY

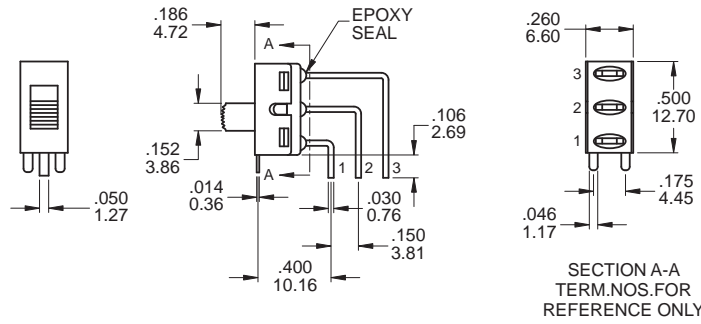
P.C. MOUNTING



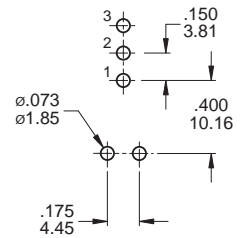
DPDT

Part No. Shown : 5MD1S102AM6QE

M7



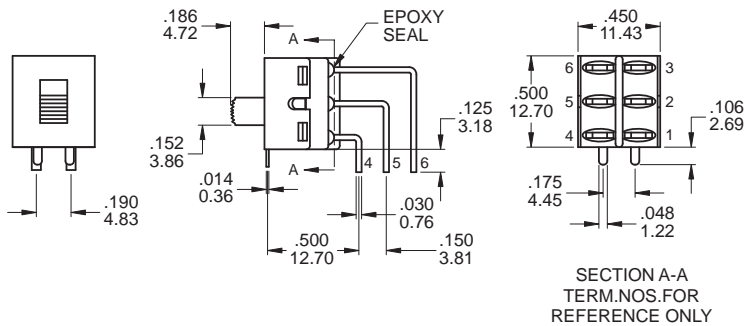
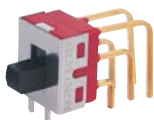
P.C. MOUNTING



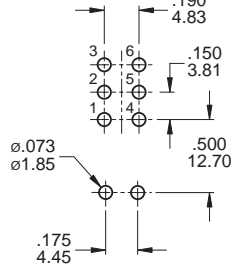
SPDT

Part No. Shown : 5MS1S102AM7QE

M7



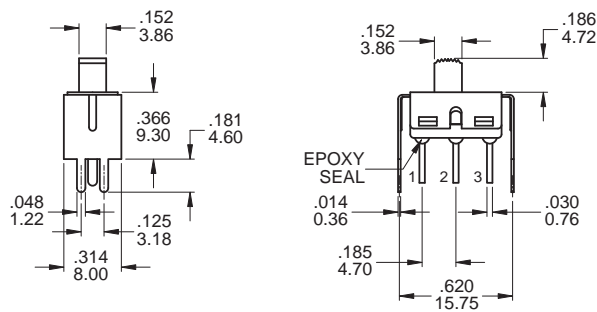
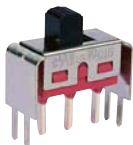
P.C. MOUNTING



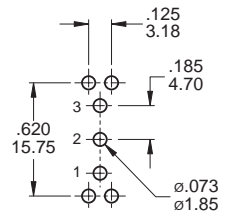
DPDT

Part No. Shown : 5MD1S102AM7RE

VS2



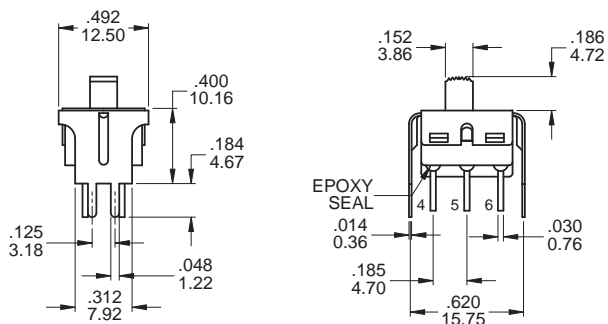
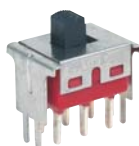
P.C. MOUNTING



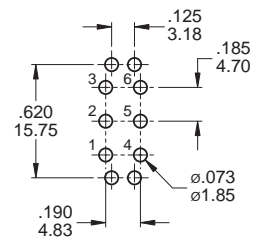
SPDT

Part No. Shown : 5MS1S102AVS2QE

VS2



P.C. MOUNTING



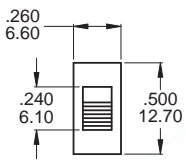
DPDT

Part No. Shown : 5MD1S102AVS2QE

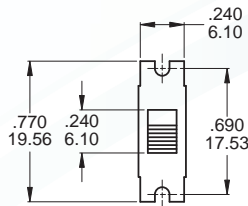
MOUNTING EARS / PANEL MOUNT

MOUNTING EARS

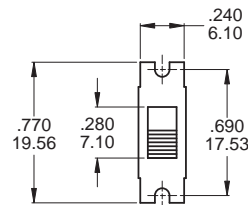
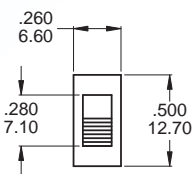
"A" WITHOUT MOUNTING EARS



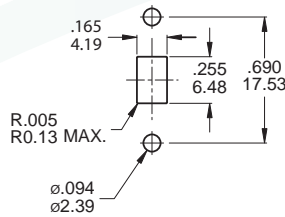
"B" WITH MOUNTING EARS



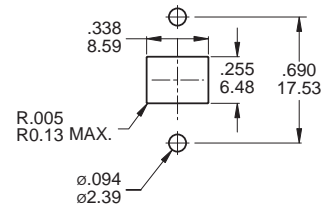
THREE POSITIONS ONLY



PANEL MOUNTING

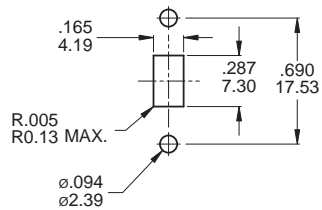


For S0,S1,S2,S3,S4



For S5 ONLY

THREE POSITIONS ONLY



For S0,S1,S2,S3,S4

CONTACT MATERIAL OPTIONS

	CONTACT PLATING	TERMINAL PLATING	RATINGS
Q	Silver	Q = Silver	5 Amps with resistant load @ 120VAC or 28VDC 2 Amps with resistant load @ 250VAC
S		S = Silver,pure - tin	
C	Gold over Silver	C = Gold over silver	
K		K = Gold over silver,pure - tin	
R	Gold	R = Gold	0.4 Volt - Amps (VA) max. @ 20V max. (AC or DC)
G		G = Gold,pure - tin	

SOLDERING PROCESSES

MANUAL SOLDERING : Use soldering iron of 30 watts, controlled at 350°C approximately 5 seconds while applying solder.

WAVE SOLDERING : Recommended Soldering Temperature : 260 ± 5°C

Duration of Solder Immersion : Max 5sec. (PCB is 1.6mm in thickness)