

SPECIFICATIONS

ELECTRICAL LIFE: 10,000 cycles

CONTACT RATING: Switch : 100MΩ max

INSULATION RESISTANCE: 100MΩ min @ 500 VDC.

CONTACT RESISTANCE: Initial : 50mΩ @ 2-4VDC @ 100mA.

DIELECTRIC STRENGTH: 500 VAC/1minute.

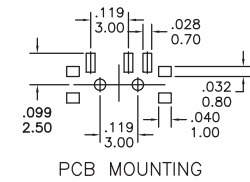
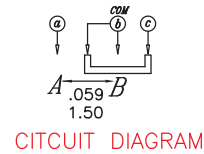
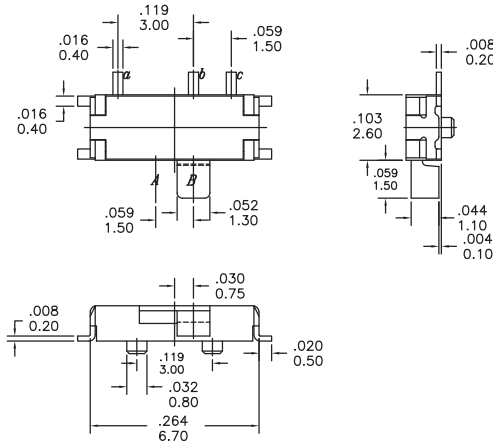
CAPACITANCE: 5pf max.

TEMPERATURE RANGE: Operating/Storage : -20°C to + 70°C.

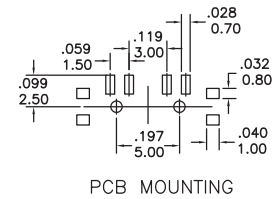
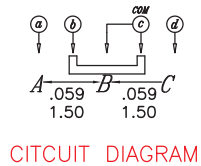
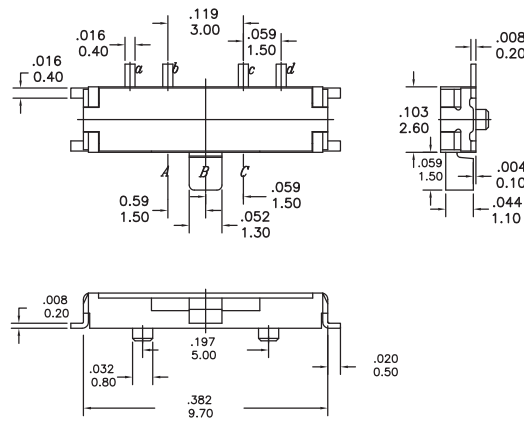
VIBRATION: To MIL-STD-202F. Method 201A.

SHOCK: To MIL-STD-202F. Method 213B, Condition A.

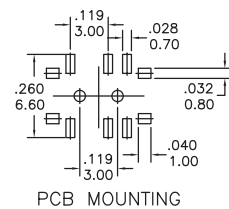
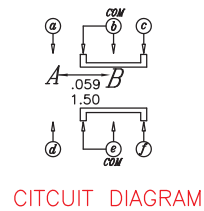
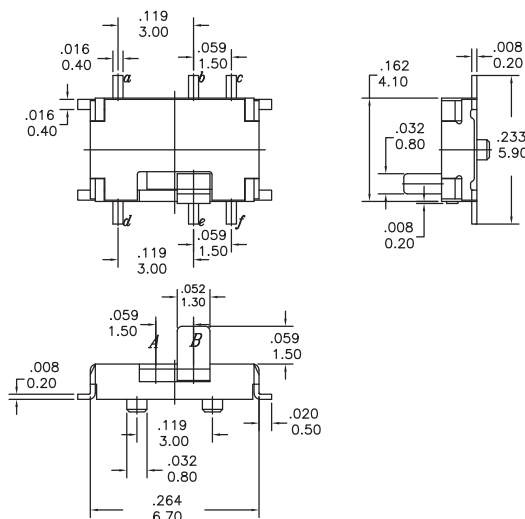
MODEL OPTIONS



MSS3



MSS4



MSS6