

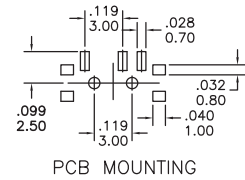
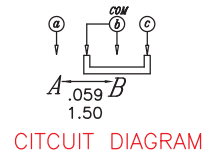
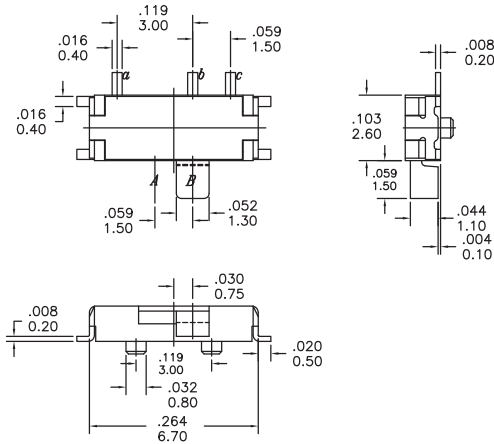
## SPECIFICATIONS

ELECTRICAL LIFE: 10,000 cycles  
 CONTACT RATING: Switch : 100MΩ max  
 INSULATION RESISTANCE: 100MΩ min @ 500 VDC.  
 CONTACT RESISTANCE: Initial : 50mΩ @ 2-4VDC @ 100mA.  
 DIELECTRIC STRENGTH: 500 VAC/1minute.  
 CAPACITANCE: 5pf max.  
 TEMPERATURE RANGE: Operating/Storage : -20°C to + 70°C.  
 VIBRATION: To MIL-STD-202F. Method 201A.  
 SHOCK: To MIL-STD-202F. Method 213B, Condition A.

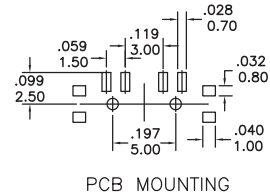
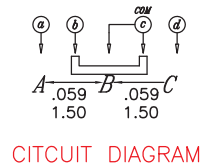
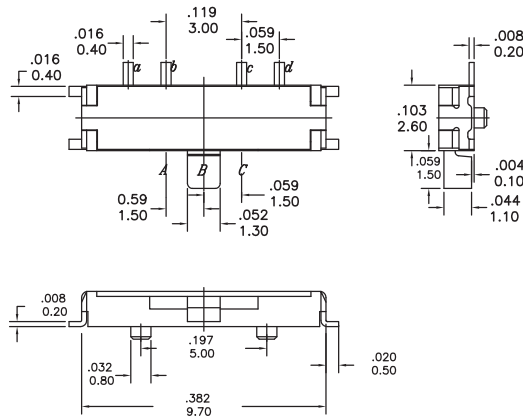
## MODEL OPTIONS



MSS3



MSS4



MSS6

