

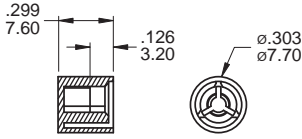
7M Series

Snap-Acting Pushbutton Switches

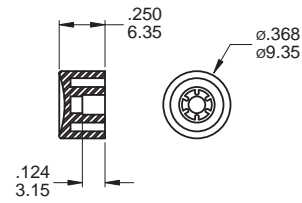
CAP OPTIONS

For 7M,7A Series Only, Cap Standard Clors: White, Black, Green, Red

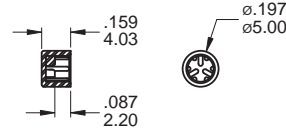
C1



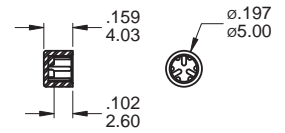
C2



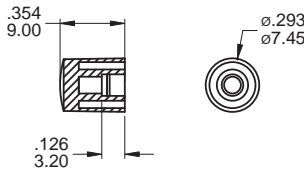
C3



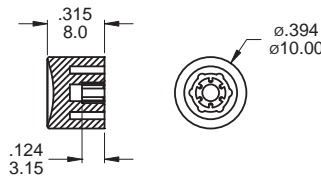
C4



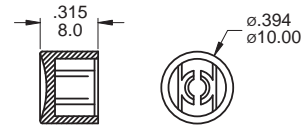
C6



C7

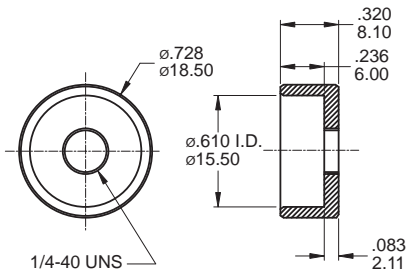


KC for PC actuator only



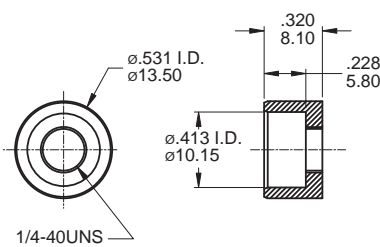
DRESS NUTS

HDW21



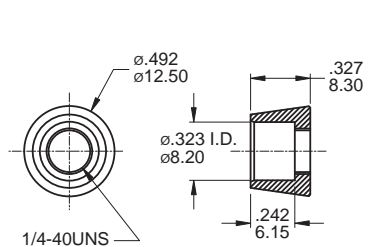
MNU-1M19

HDW22 for C2 Cap



MNU-1M20

HDW23 for C1 Cap



MNU-1M21

CONTACT MATERIAL OPTIONS

	CONTACT PLATING	TERMINAL PLATING	RATINGS
Q	Silver *7MSL/7MDL with gold over silver for plating	Q = Silver	3 Amps with resistant load @ 120VAC or 28VDC 1 Amps with resistant load @ 250VAC
C	Gold over Silver	C = Gold over silver	
R	Gold	R = Gold	0.4 Volt - Amps (VA) max. @ 20V max. (AC or DC)

SOLDERING PROCESSES

MANUAL SOLDERING: Use soldering iron of 30 watts, controlled at 350°C approximately 5 seconds while applying solder.

WAVE SOLDERING: Recommended Soldering Temperature: 270 ± 5°C

Duration of Solder Immersion: Max 5 sec. (PCB is 1.6mm in thickness)



7M
Pushbutton Switches