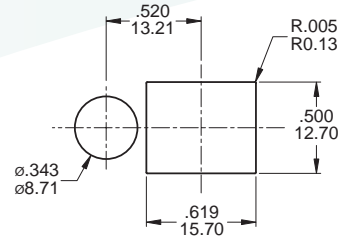
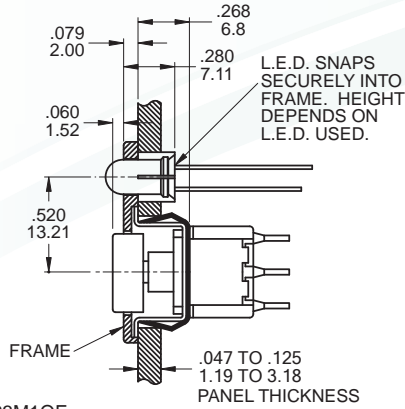
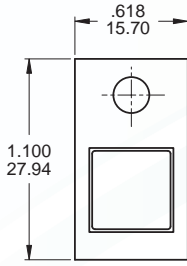
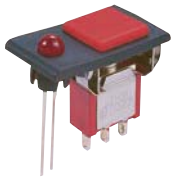


AP5 CAP & FRAME



PANEL LAYOUT

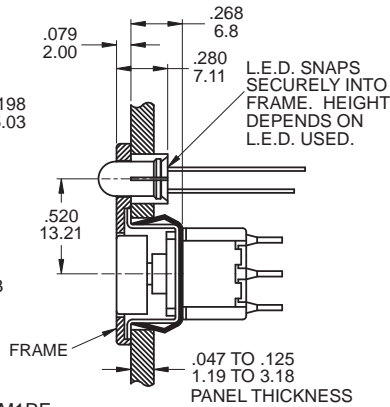
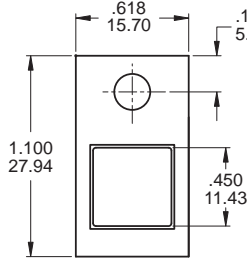
SPDT

Part No. Shown : 7MS7AP523M1QE

CAP AND FRAME COLORS

OPTION CODE	COLOR
1	WHITE
2	BLACK(std)
3	RED

AP6 CAP & FRAME



LED COLORS

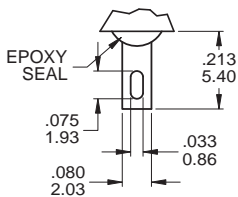
OPTION CODE	COLOR
3	RED(std)
4	ORANGE
6	GREEN

DPDT

Part No. Shown : 7MS7AP629M1RE

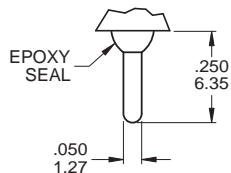
TERMINATION OPTIONS

M1 Solder lug



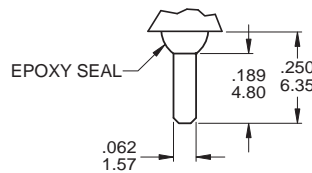
.030(0.76) THK.

M2 PC Thru-hole



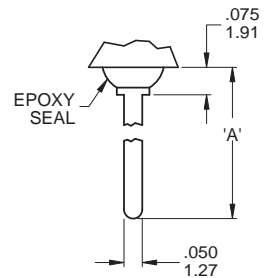
.030(0.76) THK.

M3 Quick connect



.030(0.76) THK.

M5 Wire Wrap



.030(0.76) THK.

OTHER TERMINATION OPTIONS

- M6** RIGHT ANGLE P.C. MOUNT
- M7** RIGHT ANGLE P.C. MOUNT
- VS2** VERTICAL BRACKET P.C. MOUNT
- VS3** VERTICAL BRACKET P.C. MOUNT
- VS4** VERTICAL BRACKET P.C. MOUNT
- VS5** VERTICAL BRACKET P.C. MOUNT

OPTION CODE	DIM. 'A'
M5-1	.750 (19.50)
M5-2	.964 (24.48)
M5-3	.426 (10.80)
M5-4	.650 (16.50)

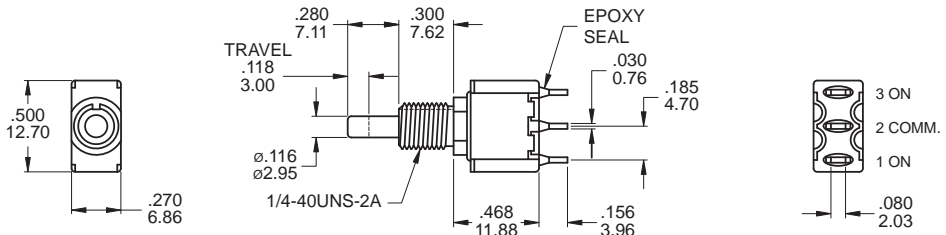


SWITCH FUNCTION

NO. POLES	UL/CSA MODEL NO.	MODEL NO.	SWITCH FUNCTION		CONNECTED TERMINALS / SCHEMATIC	
			POS.1	POS.2	POS.1	POS.2
SP	Q27	7MSL	ON	ON	1-2 	2-3
DP	Q27	7MDL	ON	ON	1-2,4-5 	2-3,5-6

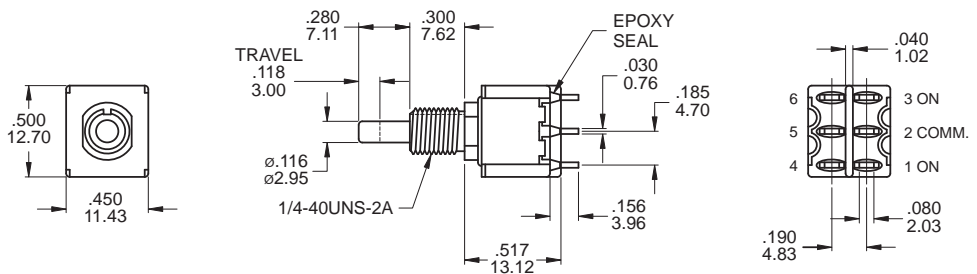
MOM=MOMENTARY

POLE OPTIONS



SPDT

Part No. Shown : 7MSLP1B60M1QE

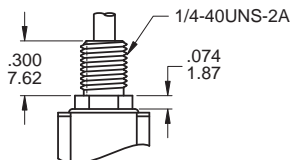
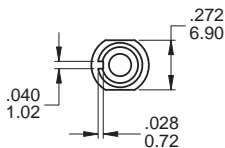


DPDT

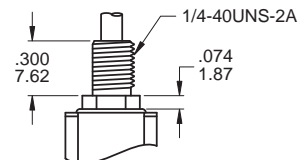
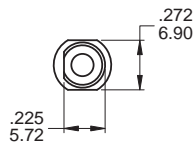
Part No. Shown : 7MDLP1B60M1QE

BUSHING OPTIONS

B60 THD STD
B70 NON-THD

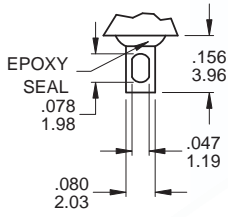


B61 THD STD
B71 NON-THD



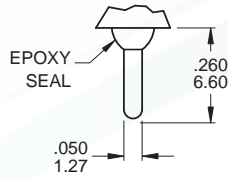
TERMINATION OPTIONS

M1 Solder lug



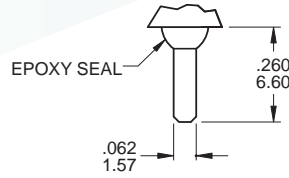
.030(0.76) THK.

M2 PC Thru-hole



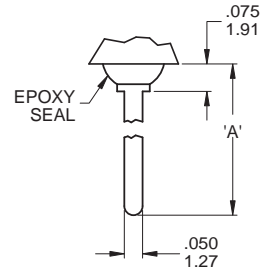
.030(0.76) THK.

M3 Quick connect



.030(0.76) THK.

M5 Wire Wrap



.030(0.76) THK.

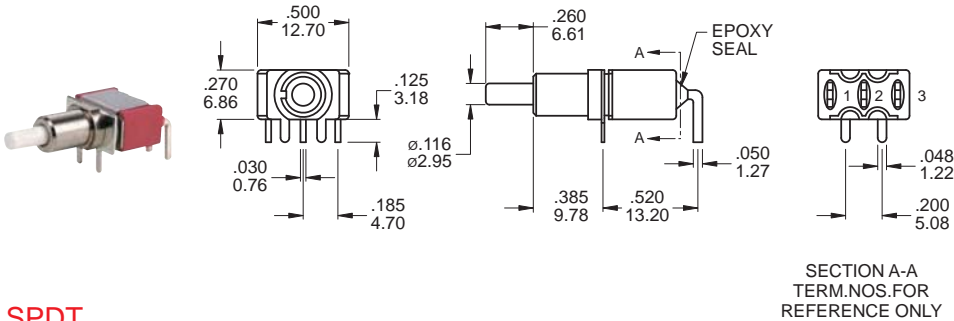
OTHER TERMINATION OPTIONS

- M6** RIGHT ANGLE P.C. MOUNT
- M7** RIGHT ANGLE P.C. MOUNT
- VS2** VERTICAL BRACKET P.C. MOUNT
- VS3** VERTICAL BRACKET P.C. MOUNT

OPTION CODE	DIM. 'A'
M5-1	.750 (19.50)
M5-2	.964 (24.48)
M5-3	.426 (10.80)
M5-4	.650 (16.50)

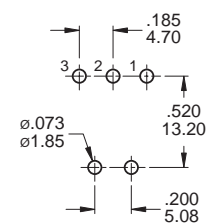
TERMINATION OPTIONS

M6



SECTION A-A
TERM.NOS.FOR
REFERENCE ONLY

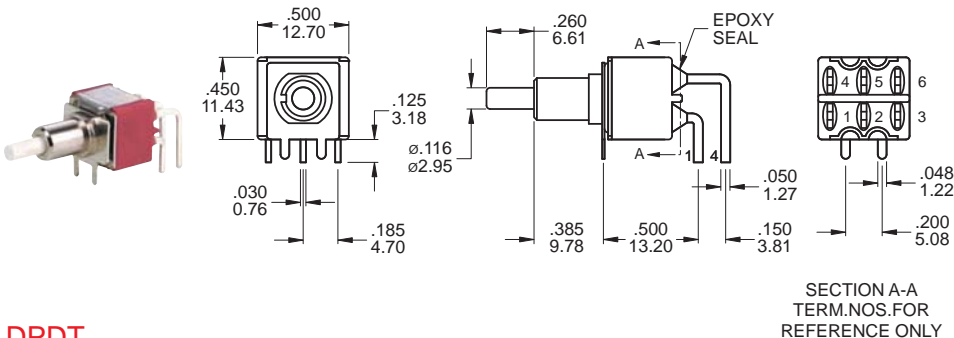
P.C. MOUNTING



SPDT

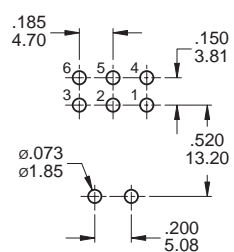
Part No. Shown : 7MSLP1B70M6QE

M6



SECTION A-A
TERM.NOS.FOR
REFERENCE ONLY

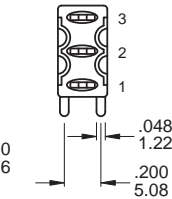
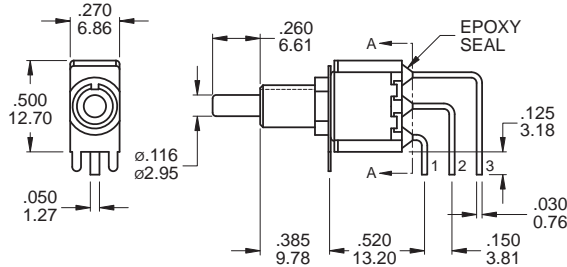
P.C. MOUNTING



DPDT

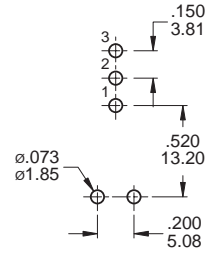
Part No. Shown : 7MDLP1B70M6QE

M7



SECTION A-A
TERM.NOS.FOR
REFERENCE ONLY

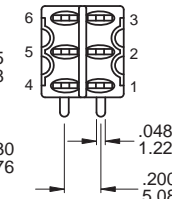
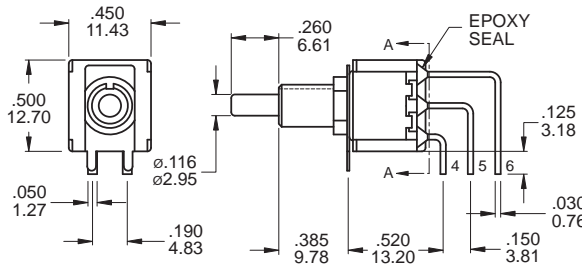
P.C. MOUNTING



SPDT

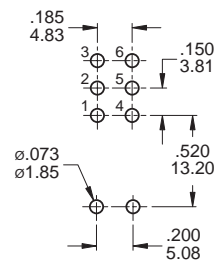
Part No. Shown : 7MSLP1B70M7QE

M7



SECTION A-A
TERM.NOS.FOR
REFERENCE ONLY

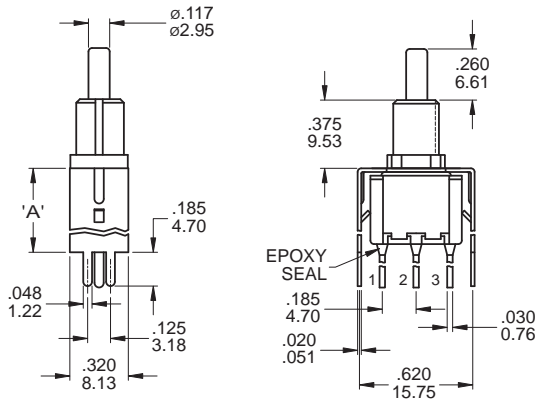
P.C. MOUNTING



DPDT

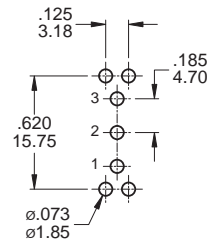
Part No. Shown : 7MDLP1B70M7QE

VS2 - VS3



OPTION CODE	DIM. 'A'
VS2	.460
VS3	.630

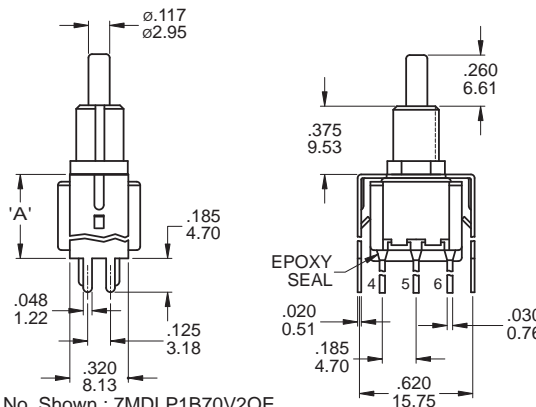
P.C. MOUNTING



SPDT

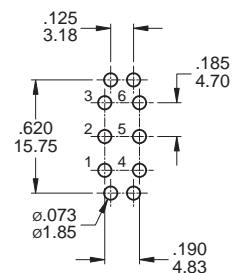
Part No. Shown : 7MSLP1B70V2QE

VS2 - VS3



OPTION CODE	DIM. 'A'
VS2	.460
VS3	.630

P.C. MOUNTING



DPDT

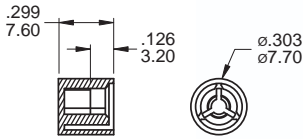
Part No. Shown : 7MDLP1B70V2QE



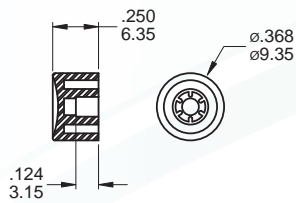
CAP OPTIONS

For 7M,7A Series ONLY, CAP Colors: White, Black, Green, Red

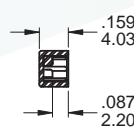
C1



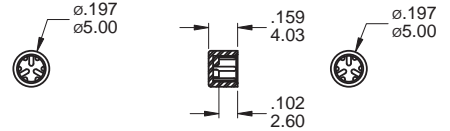
C2



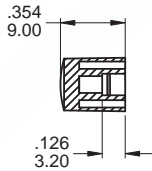
C3



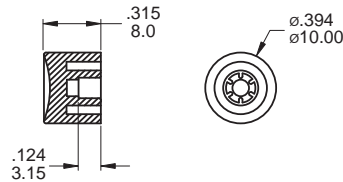
C4



C6



C7

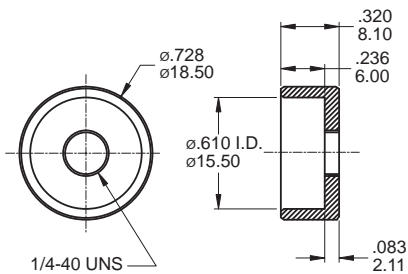


KC for PC actuator only



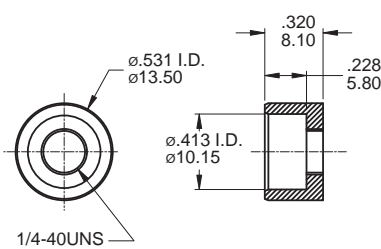
DRESS NUTS

HDW21



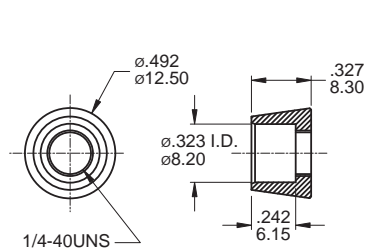
MNU-1M19

HDW22 for C2 Cap



MNU-1M20

HDW23 for C1 Cap



MNU-1M21

CONTACT MATERIAL OPTIONS

	CONTACT PLATING	TERMINAL PLATING	RATINGS
Q	Silver	Q = Silver	3 Amps with resistant load @ 120VAC or 28VDC 1 Amps with resistant load @ 250VAC
S		S = Silver,pure - tin	
C	Gold over Silver	C = Gold over silver	
K		K = Gold over silver,pure - tin	
R	Gold	R = Gold	0.4 Volt - Amps (VA) max. @ 20V max. (AC or DC)
G		G = Gold,pure - tin	

SOLDERING PROCESSES

MANUAL SOLDERING: Use soldering iron of 30 watts, controlled at 350°C approximately 5 seconds while applying solder.

WAVE SOLDERING: Recommended Soldering Temperature: 260 ± 5°C

Duration of Solder Immersion: Max 5 sec. (PCB is 1.6mm in thickness)

7M(Lock) Snap-Acting Pushbutton Switches