

FK Series

Foot Switches



SPECIFICATIONS

RATING: DC9V,1A

MECHANICAL LIFE: S7/D7: 20,000 cycles
 SL/DL: 10,000 cycles
 37/3L: 30,000 cycles

CONTACT RESISTANCE: 50 mΩ MAX. / 30mΩ MAX. (FK37/3L)

INSULATION RESISTANCE: DC 500V 100MΩ MIN.

DIELECTRIC STRENGTH: 1,000 V RMS. @sea level.

500V RMS @sea level.(FK37/3L)

OPERATING FORCE: S7: 1.7±0.7Kgf

SL: 1.0±0.7Kgf (LOCK)

D7: 2.5±0.8Kgf

DL: 1.6±0.5Kgf (LOCK)

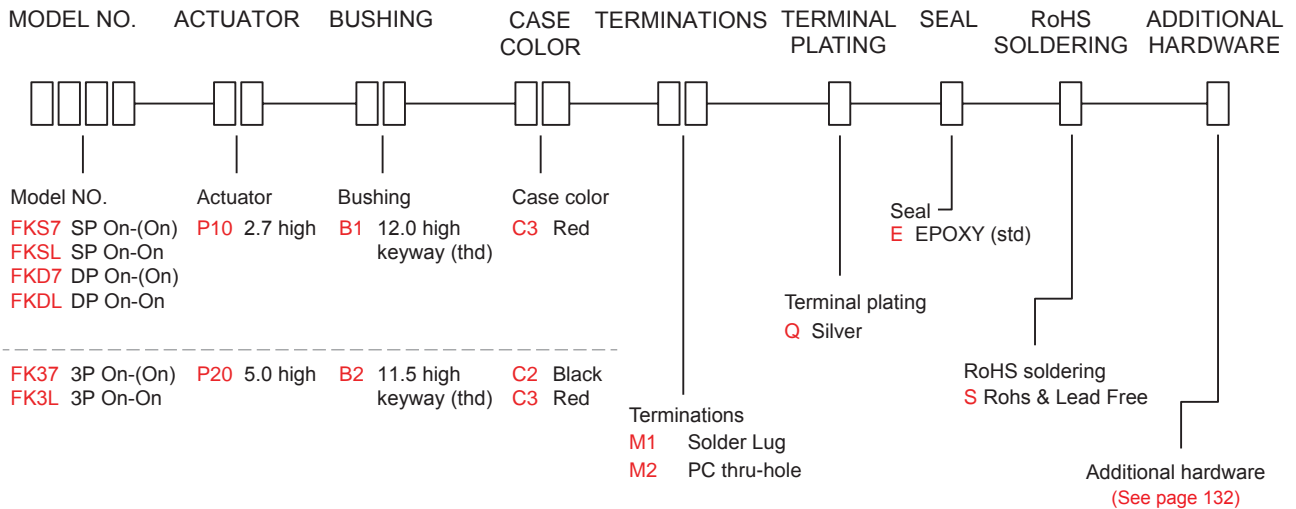
37/3L: 3.0±0.8Kgf

OPERATING TEMPERATURE: -10°C to 70°C.



HOW TO ORDER

FK Pushbutton Switches



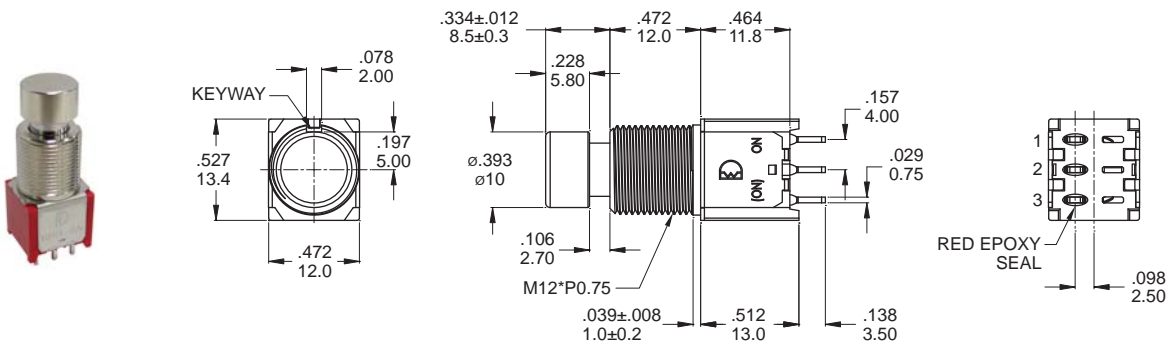
SWITCH FUNCTION

NO. POLES	MODEL NO.	SWITCH FUNCTION		CONNECTED TERMINALS / SCHEMATIC	
		POS.1	POS.2	POS.1	POS.2
SP	FKS7	ON	(ON)	2-1	2-3
	FKSL	ON	ON		
DP	FKD7	ON	(ON)	2-1,5-4	2-3,5-6
	FKDL	ON	ON		
3P	FK37	ON	(ON)	2-1,5-4,8-7	2-3,5-6,8-9
	FK3L	ON	ON		

()=MOMENTARY

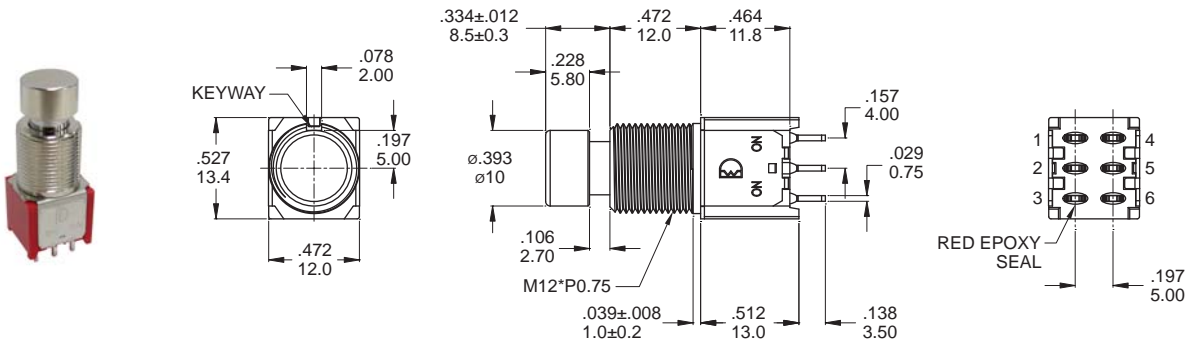
TERMINATION OPTIONS

S7



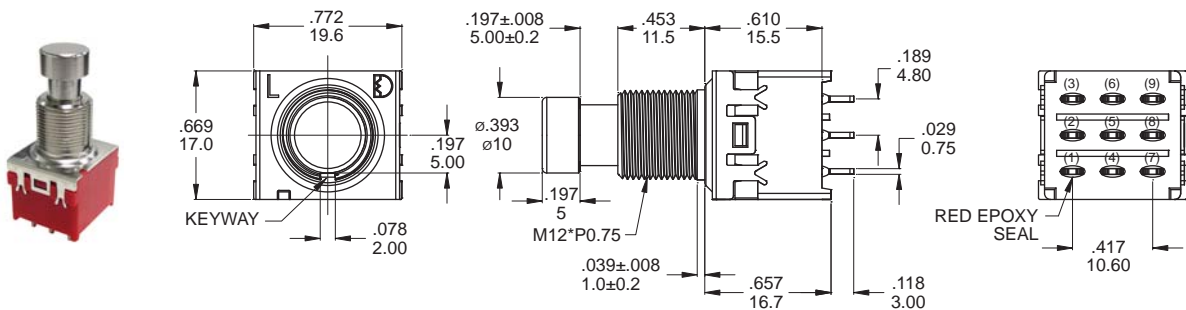
Part No. Shown : FKS7P10B1C3M1QES-5

DL



Part No. Shown : FKDLP10B1C3M2QES-5

3L



Part No. Shown : FK3LP20B2C3M2QES-5

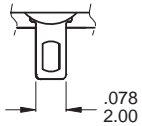
FK Pushbutton Switches

FK Series

Foot Switches

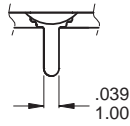
TERMINATION OPTIONS

M1 Solder lug



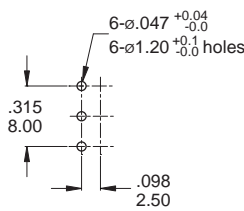
.029(0.75) THK.

M2 PC Thru-hole

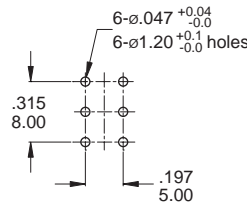


.029(0.75) THK.

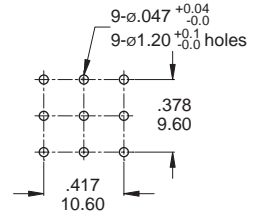
P.C.B MOUNTING



S7/SL



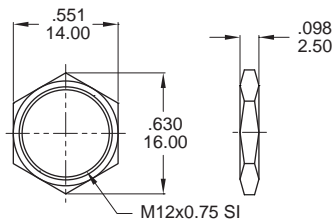
D7/DL



37/3L

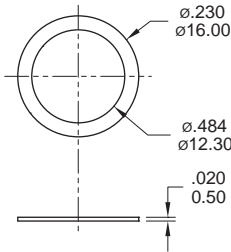
HARDWARE

NUT



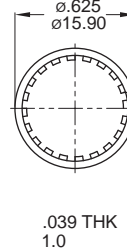
MNU-PA03

WASHE



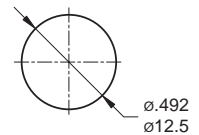
NU-7K01

TOOTH WASHE

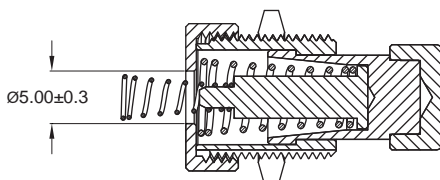
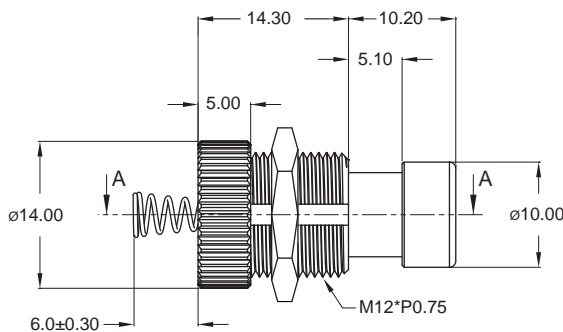


NU-1M09

PANEL MOUNTING



PUSHBUTTON SWITCH



SPECIFICATIONS

LIFE CYCLES: 20,000 cycles.

OPERATING FORCE: 650±200gf.cm

* Working force for bushing with nut: Test with torsion meter and increase torsion greater than 8kgf.cm.

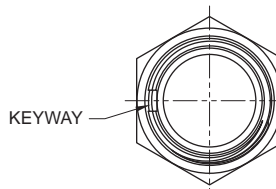
* Stay-Nut torsion strength 8kgf.cm.

* 1 pc. of nut is packed separately.

PART NO.(P/N.)

FK-P1B1-5

Additional hardware
Bushing
Actuator



FK Pushbutton Switches