



SPECIFICATION:

MAX. CURRENT/VOLTAGE RATING WITH RESISTIVE LOAD:

100mA 24VDC-life expectancy 200,000 cycles
2A 125VAC-life expectancy 10,000 cycles

INITIAL CONTACT RESISTANCE: 50mΩ max.

INSULATION RESISTANCE: 1GΩ min.at 500VDC.

DIELECTRIC STRENGTH: 1,000 VAC rms.

ELECTRICAL LIFE AT FULL LOAD: 200,000 cycles.

OPERATING TEMPERATURE: -30°C to 85°C.

PANEL THICKNESS: 1.5 mm (.059) min. -4 mm (.157) max.

TOTAL TRAVEL: 2.5 mm(.098)

OPERATING FORCE: 2N-5N

CONTACT BOUNCE: 10 ms.

MECHANICAL LIFE: 1,000,000 cycles.

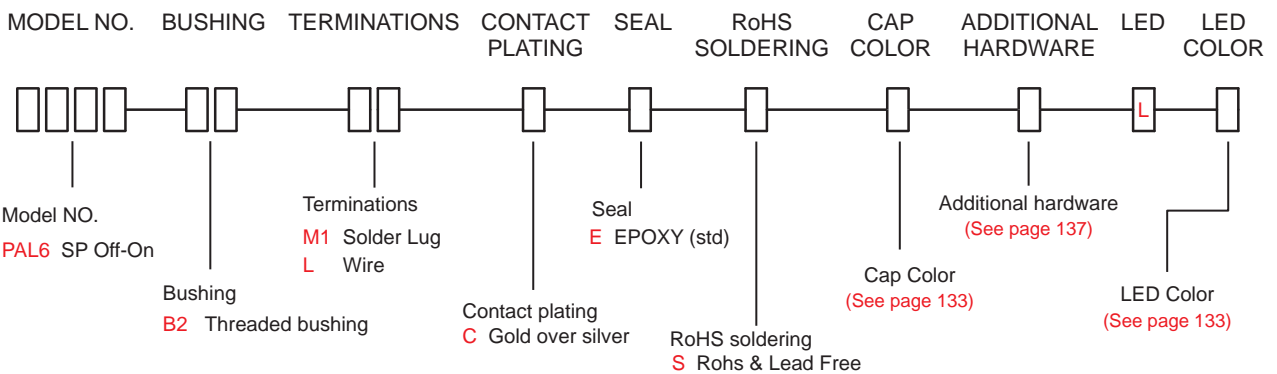
TORQUE: 0.5 Nm max.applied to nut

SOLDERING: 350°C max.for 5 seconds.

IP 67
ACCORDING TO
EN 60529:1997+A1:2001
IEC 60529:2001

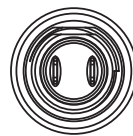
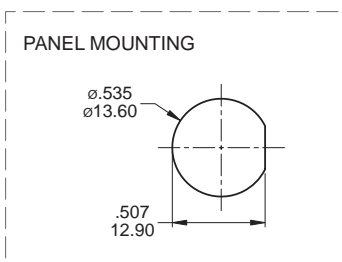
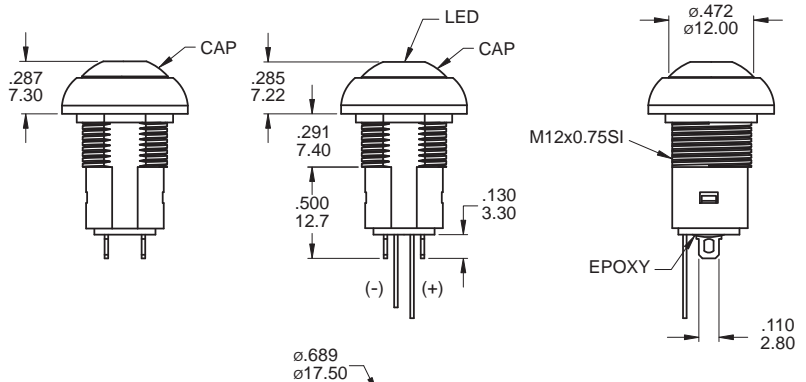


HOW TO ORDER

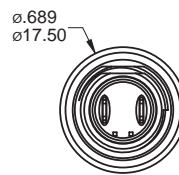


SWITCH FUNCTION

MODEL NO.	POS.1	POS.2
	PAL6	OFF
TERM. COMM.	OPEN	
SCHEMATIC		



Non-LED



LED

ADDITIONAL HARDWARE

- 1.M12 X 0.75 NUTS (MNU- PA03)
- 2.LOCKING WASHER (MNU-1M09)
- 3.O-RING (FCP-A253)

Wire

※ Multi-wire lead AWG20, section 0.6mm², UL approved. (Black / Green / Red)

L=Wire length

Code:L1=500mm
Code:L2=90mm
Code:L3=100mm

