







## BUSHING PLATING



- PLATING  
**A** Chromium  
**B** Tin-nickel Alloy  
**C** Stain-chromium  
**D** Stain-nickel



Chromium



Tin-nickel Alloy



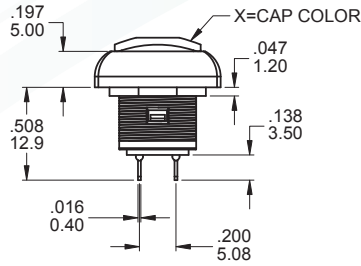
Stain-chromium



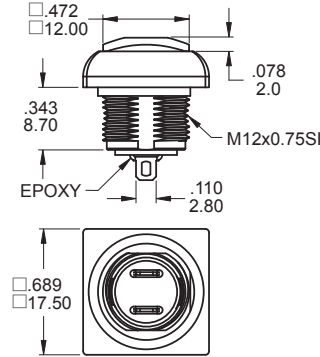
Stain-nickel



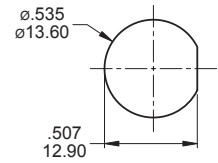
SPST



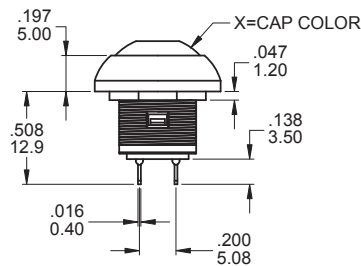
Part No. Shown : PAS6D1M1CESX-5



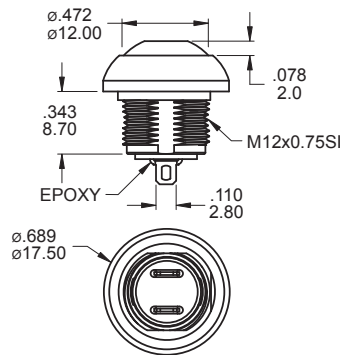
PANEL MOUNTING



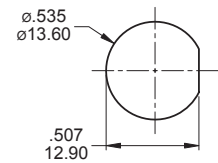
SPST



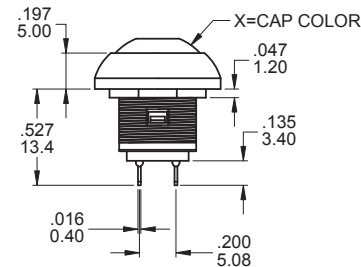
Part No. Shown : PAS6D2M1CESX-5



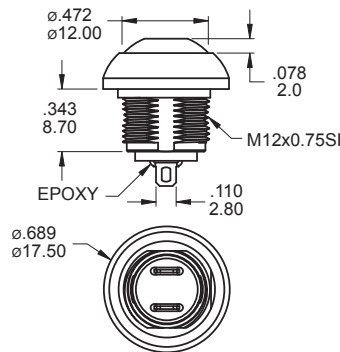
PANEL MOUNTING



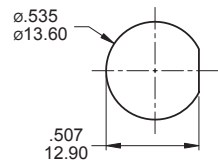
SPST



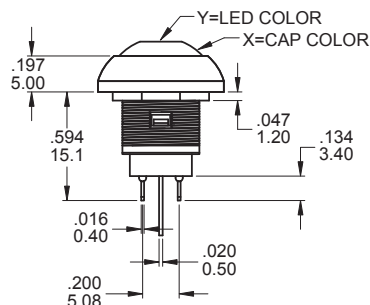
Part No. Shown : PAS7D2M1CESX-5



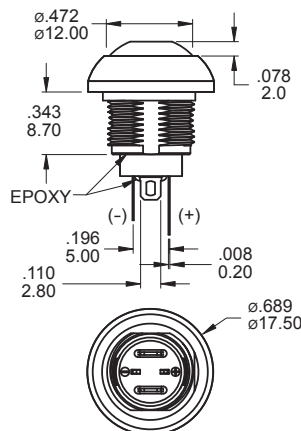
PANEL MOUNTING



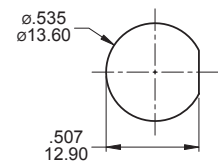
SPST



Part No. Shown : PAS6D2M1CESX-5LY

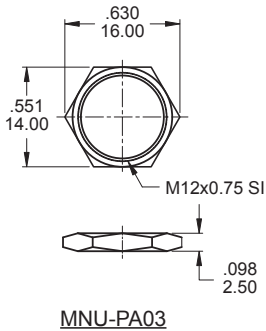


PANEL MOUNTING

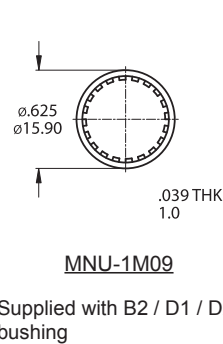


## HARDWARE

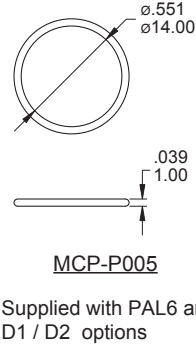
### M12 NUT



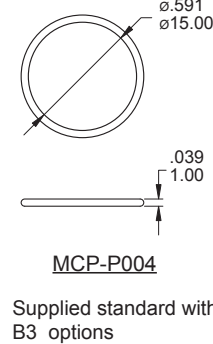
### LOCK WASHER



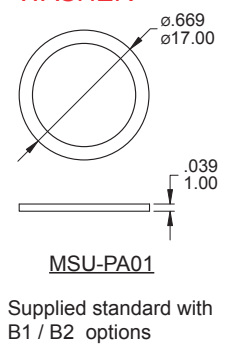
### O-RING



### O-RING



### RUBBER WASHER



## WITH LED ELECTRO-OPTICAL DATA

\* The LED specification for reference only

Model No.	Lens Appearance	Color	Electro-optical Data (AT 20mA)				Peak Wavelength	Viewing Angle 2θ 1/2 (deg)	
			Vf (V)		Iv (mcd)				
			Typ.	Max.	Typ.	Min.			
PAS6 & PAS7	Water Clear	Super White	2.8	3.3	200	100	X / Y=0.27	35°	
		Super Red	2.0	2.5	700	200			
		Yellow	2.1	2.6	100	55			
		Green	2.2	2.7	130	70			
		Super Blue	3.1	3.6	580	250			
		Super Yellow ( Super Green )	Y	2	2.6	475			210
			G	2	2.6	210			140
		Super Yellow ( Super Blue )	Y	2.1	2.6	200			94
			B	3.2	3.6	200			94
		Super Yellow ( Super Red )	Y	2.1	2.6	100			63
			R	2	2.6	90			42
		Super Red ( Super Green )	R	2	2.6	90			42
G	2.0		2.6	90	42				
Super Red ( Super Blue )	R	2	2.6	90	42				
	B	3.2	3.6	200	94				
Super Green ( Super Blue )	G	2.0	2.6	100	42				
	B	3.2	3.6	200	94				
PAL6	Water Clear	White	3.3	4	250	50	X=0.31 Y=0.31	90°	
		Super Red	1.95	2.5	350	70			
		Super Yellow	2	2.5	160	70			
		Super Green	2.1	2.5	70	18			
		Super Blue	3.3	4	150	36			
		Super Yellow ( Super Green )	Y	2	2.5	170		50	170°
			G	2.1	2.5	50		18	
		Super Yellow ( Super Red )	Y	1.95	2.5	220		70	
			R	2	2.5	170		50	
		Super Red ( Super Green )	R	1.95	2.5	220		70	
G	2.1		2.5	50	18				

## SOLDERING PROCESSES

**MANUAL SOLDERING:** Use soldering iron of 30 watts, controlled at 350°C approximately 5 seconds while applying solder.

**WAVE SOLDERING:**

Recommended Soldering Temperature: 260 ± 5°C

Duration of Solder Immersion: Max 5 sec.

(PCB is 1.6mm in thickness)

IP 67 for the whole series:  
Protected against the effects of immersion up to 1 m water(30mn)

