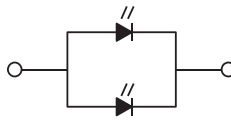


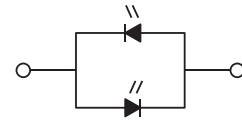
CONFIGURATION



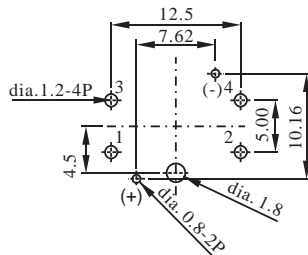
Single chip LED



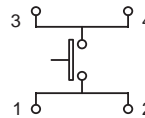
Single Color / 2chips led



Dual Colors LED



P.C.B. Mounting Holes



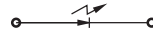
(SPST)
Contact Configuration

LED CHARACTERISTICS

The electrical specifications shown are determined at a basic temperature of 25 C. If the source voltage exceeds the rated voltage of LED, a ballast resistor must be connected in series with the LED.



Attention: LED are electrostatic sensitive devices



Single color	Forward Voltage V_F (V) at 20mA	Forward Current I_F (mA)	Reverse Voltage V_R (V)	Reverse Current I_R (uA) at $V_R=5V$
bi-Red	1.8~2.6	Typical 20mA 30 mA max.	5V	100uA max.
Super Yellow	2.0~2.5			
Green	2.2~2.6			
Super Green	2.0~2.6			
Pure Green	3.2~3.6			
Blue	3.5~4.0			
White	3.2~3.8			
Bicolor LED				
Red & Blue	Red 1.8~2.6 Blue 3.5~4.0	Typical 20mA 30 mA max.	5V	100uA max.
Red & Pure Green	Red 1.8~2.6 Pure Green 3.2~3.6			
Pure Green & Blue	Pure Green 3.2~3.6 Blue 3.5~4.0			

Notes: 1.LED circuit is isolated and requires external power source.

2.LED an integral part of the switch.

3.Emitting color:±20%

4.Forward Voltage:±0.1V

5..Liminous intensity / Luminous Flux:±20%