

SPECIFICATIONS

CONTACT: Stainless steel

RATING: 50mA, 5VDC

STROKE: 2mm

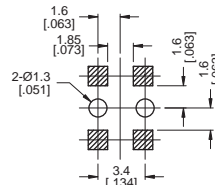
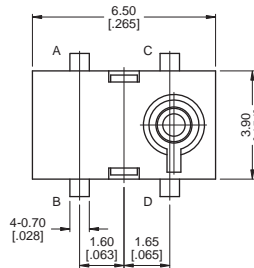
OPERATING FORCE: 30gf max

CONTACT RESISTANCE: 500mΩ max.

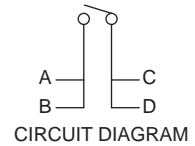
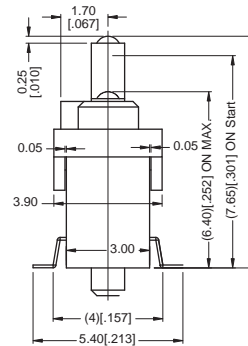
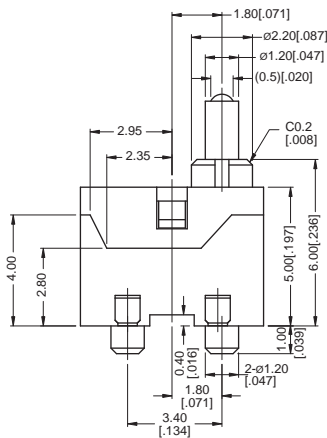
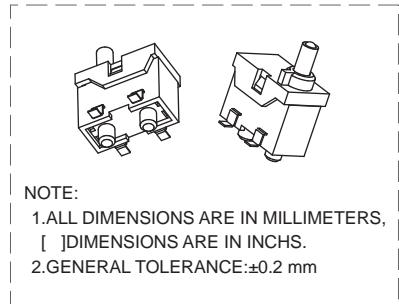
MODEL OPTIONS



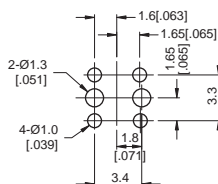
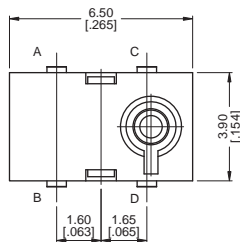
TE-M



P.C.B. LAYOUT



TE-H



P.C.B. LAYOUT

