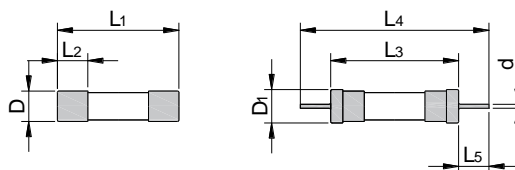


Fuse SGF520 Series

Fast Acting

Glass Tube Ø5 x 20 mm

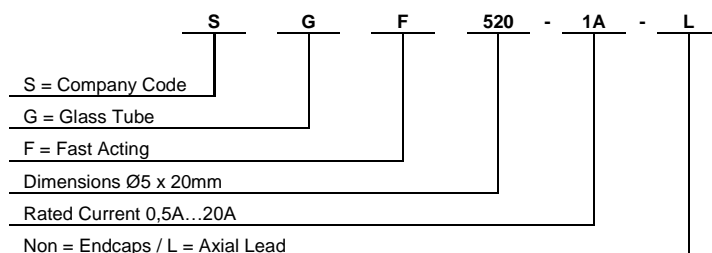


L ₁	L ₂	L ₃	L ₄	L ₅	D	D ₁	d
20.0 ±0.5	5.0 +0.25 / -0	21.0 ±1.0	97.0 ±2.0	38.0 ±2.0	Ø5.0 +0.25 / -0	Ø5.5 +0.2	≤6.3A: Ø0.65 ±0.05 >6.3A-10A: Ø0.8 ±0.05 >10A: Ø1.2 ±0.05

Key Features

- Ø5 x 20mm Physical Size
- Fast Acting
- Low Breaking Capacity
- Glass Tube, Nickel-plated Brass Endcap Construction
- Designed to IEC 60127-2/Sheet2.GB 9364-2/Sheet2
- RoHS & REACH compliant

Part Number System



Specification

Model	Rated Current	Rated Voltage	Rated Breaking Capacity	Typical DC Cold Resistance ⁽¹⁾	Max. Voltage Drop ⁽²⁾	Typical Melting I ² t	CCC	CQC	VDE	KC	PSE	UL/cUL	RoHS REACH
		(VAC)	(A)	(mΩ)	(mV)	(A ² Sec)	CCC	CQC	VDE	KC	PSE	UL/cUL	RoHS REACH
SGF520-500mA	500 mA	250	35		1000		○	○	○	○	○	○	●
SGF520-630mA	630 mA	250	35		650		○	○	○	○	○	○	●
SGF520-800mA	800 mA	250	35		240		○	○	○	○	○	○	●
SGF520-1A	1 A	250	35	95.00	200	1.50	●		●	●	●	●	●
SGF520-1.25A	1.25 A	250	35	80.00	200	2.59	●		●	●	●	●	●
SGF520-1.6A	1.6 A	250	35	60.00	190	4.25	●		●	●	●	●	●
SGF520-2A	2 A	250	35	50.00	170	6.24	●		●	●	●	●	●
SGF520-3.15A	3.15 A	250	35	32.00	150	8.93	●		●	●	●	●	●
SGF520-4A	4 A	250	35	19.00	130	36.00	●		●	●	●	●	●
SGF520-5A	5 A	250	50	15.00	130	46.04	●		●	●	●	●	●
SGF520-6.3A	6.3 A	250	63	12.00	130	69.12	●		●	●	●	●	●
SGF520-8A	8 A	250	80	9.00	130	144.00		●	●	●	●	●	●
SGF520-10A	10 A	250	100		130			●	●	●	●	●	●
SGF520-12A	12 A	250	120		110		○	○	○	○	○	○	●
SGF520-12.5A	12.5 A	250	125		100		○	○	○	○	○	○	●
SGF520-15A	15 A	250	150		100	585.00	○	○	○	○	○	○	●
SGF520-16A	16 A	250	160		100	715.35	○	○	○	○	○	○	●
SGF520-20A	20 A	250	200		100	945.78	○	○	○	○	○	○	●

○ – On-going

⁽¹⁾ – DC Cold Resistance (Measured at <10% of rated current).

⁽²⁾ – Max. Voltage Drop (voltage drop was measured at 20°C ambient temperature at rated current).