

Thermal Link R Series

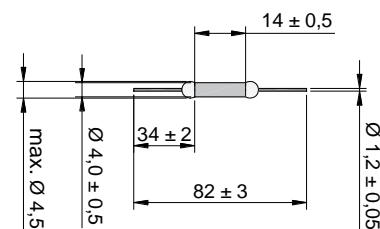
15A Series

Key Features




- Ceramic case
- Non-resettable
- High accuracy of function temperature
- RoHS & REACH compliant

Customization

- Other temperature can be customized
- The length of lead wires can be customized as required
- Lead wires can be insulated
- Taping packing available



Specification

Model	T _f	Fusing Temp.	T _h	T _m	I _r	U _r	I _n 8/20 μs (15 Times)	I _{max} 8/20 μs (1 Time)			
	(°C)	(°C)	(°C)	(°C)	(A)	(V)	(kA)	(kA)	TUV	CCC	
R0	76	73±2	43	200	15	AC 250	5	10	●	●	●
						DC 60	5	10	●	●	●
R18	86	81±2	51	200	15	AC 250	5	10	●	●	●
						DC 60	5	10	●	●	●
R1	102	98±2	72	200	15	AC 250	6	12	●	●	●
						DC 60	6	12	●	●	●
R2	115	111±2	85	200	15	AC 250	6	12	●	●	●
						DC 60	6	12	●	●	●
R3	125	121±2	95	200	15	AC 250	6	12	●	●	●
						DC 60	6	12	●	●	●
R4	130	125±2	100	200	15	AC 250	6	12	●	●	●
						DC 60	6	12	●	●	●
R5	135	130±2	105	200	15	AC 250	6	12	●	●	●
						DC 60	6	12	●	●	●
R6	145	140±2	115	200	15	AC 250	6	12	●	●	●
						DC 60	6	12	●	●	●
R7	150	145±2	120	200	15	AC 250	6	12	●	●	●
						DC 60	6	12	●	●	●
R16	160	155±2	130	200	15	AC 250	6	12	●	●	●
						DC 60	6	12	●	●	●
R32	205	199±3	167	250	15	AC 250	7	14	●	●	●
						DC 60	7	14	●	●	●
R31	221	218±2	186	250	15	AC 250	7	14	●	●	●
						DC 60	7	14	●	●	●