

Thermal Link U Series

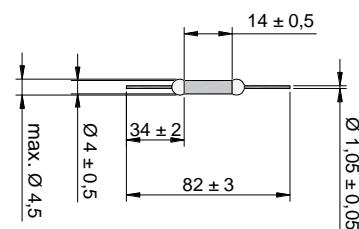
10A Series

Key Features




- Ceramic case
- Non-resettable
- High accuracy of function temperature
- RoHS & REACH compliant

Customization

- Other temperature can be customized
- The length of lead wires can be customized as required
- Lead wires can be insulated
- Taping packing available



Specification

Model	T _r	Fusing Temp.	T _h	T _m	I _r	U _r	I _n 8/20 μs (15 Times)	I _{max} 8/20 μs (1 Time)			
	(°C)	(°C)	(°C)	(°C)	(A)	(V)	(kA)	(kA)	TÜV	CCC	
U0	76	73±2	43	200	10	AC 250	3	6	•	•	•
						DC 60	3	6	•	•	•
U18	86	81±2	51	200	10	AC 250	3	6	•	•	•
						DC 60	3	6	•	•	•
U1	102	98±2	72	200	10	AC 250	4	8	•	•	•
						DC 60	4	8	•	•	•
U2	115	111±2	85	200	10	AC 250	4	8	•	•	•
						DC 60	4	8	•	•	•
U3	125	121±2	95	200	10	AC 250	4	8	•	•	•
						DC 60	4	8	•	•	•
U4	130	125±2	100	200	10	AC 250	4	8	•	•	•
						DC 60	4	8	•	•	•
U5	135	130±2	105	200	10	AC 250	4	8	•	•	•
						DC 60	4	8	•	•	•
U6	145	140±2	115	200	10	AC 250	4	8	•	•	•
						DC 60	4	8	•	•	•
U7	150	145±2	120	200	10	AC 250	4	8	•	•	•
						DC 60	4	8	•	•	•
U16	160	155±2	130	200	10	AC 250	4	8	•	•	•
						DC 60	4	8	•	•	•
U32	205	199±3	167	250	10	AC 250	5	10	•	•	•
						DC 60	5	10	•	•	•
U31	221	218±2	186	250	10	AC 250	5	10	•	•	•
						DC 60	5	10	•	•	•