

## SPECIFICATIONS

**CIRCUIT:** SPST

**FUNCTION:** MOMENTARY

**CONTACT RATING:** 1~50mA @ 5V~24VDC (resistive load)

**OPERATING FORCE:** Standard Force: 170 ± 40gf  
High Force : 260 ± 50gf

**TOTAL TRAVEL:** 0.25 +0.2/-0.1mm

### ELECTRICAL LIFE:

170gf (standard force): 500,000 operations min.

260gf (high force) : 300,000 operations min.

**CONTACT RESISTANCE:** 100 mΩ max. (initialvalue)

**INSULATION RESISTANCE:** 100 MΩ min.

**DIELECTRIC STRENGTH:** 500 RMS @ sea level.

**OPERATING TEMPERATURE:** -25°C to 70°C.

### MATERIALS

**CASE:** PBT(UL94V-0).

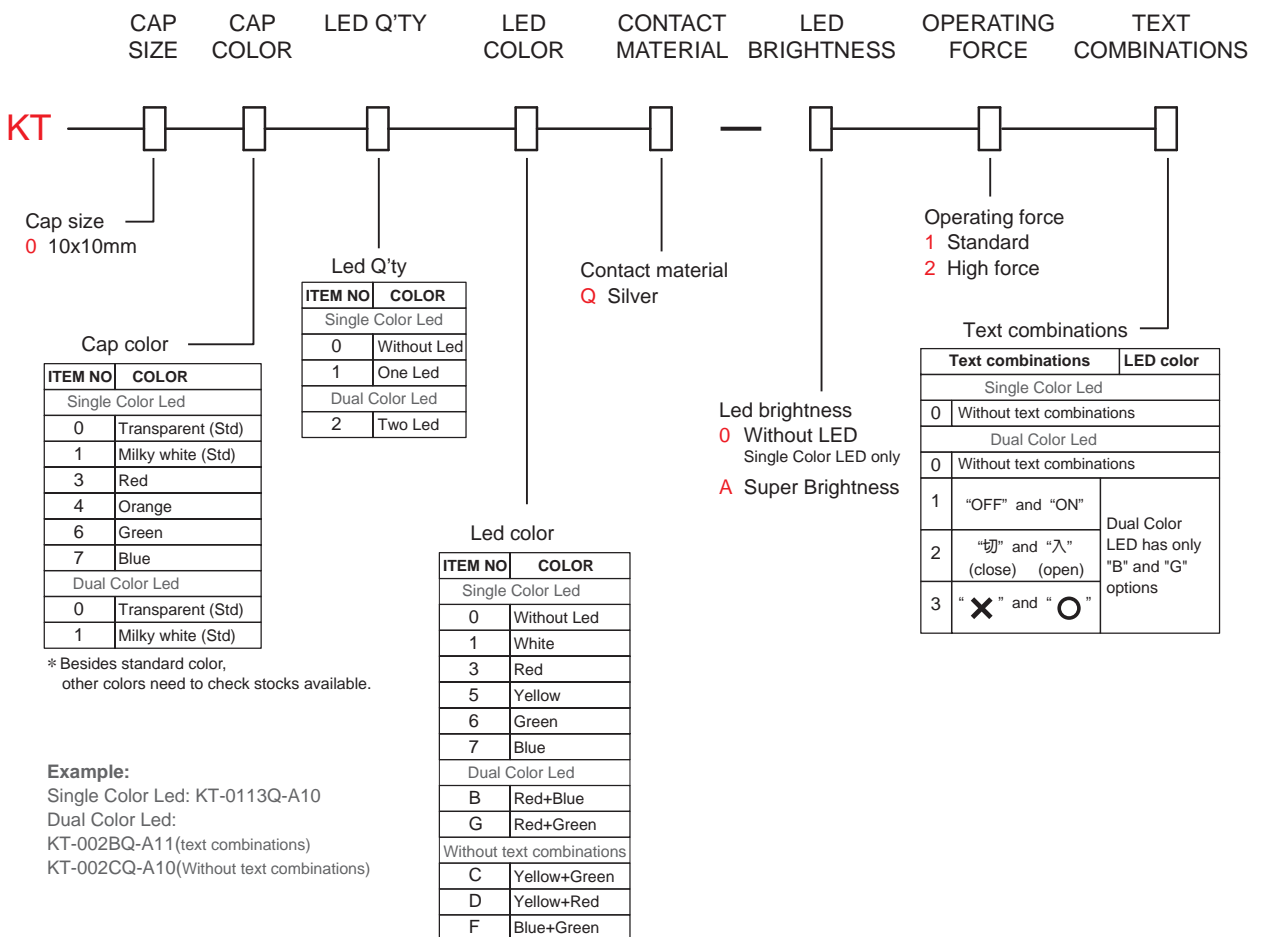
**HOUSING:** PBT(UL94V-0).

**ACTUATOR:** PC

**TERMINAL/CONTACT:** Brass,silver plated.



## HOW TO ORDER



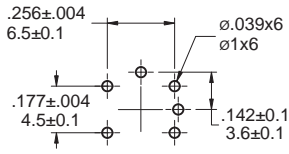
KT  
Tact Switches

# KT Series

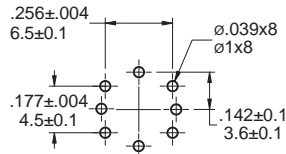
Tact Switches

## P.C.B MOUNTING / CIRCUIT

### P.C.B MOUNTING

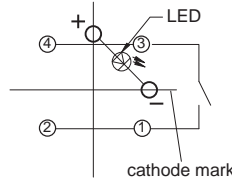


Single Color Led  
TOP VIEW

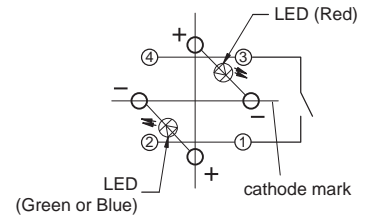


Dua Color Led  
TOP VIEW

### CIRCUIT

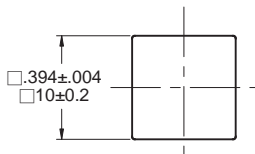


Single Color Led  
TOP VIEW

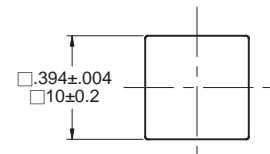


Dua Color Led  
TOP VIEW

## DIMENSION

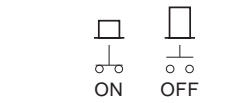
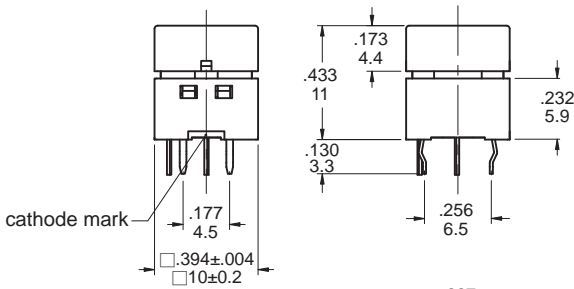


Part No. Shown: KT-011□Q-A10

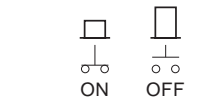
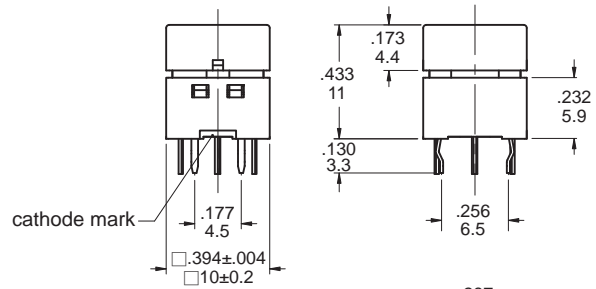
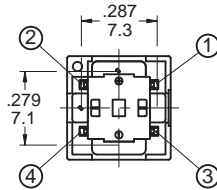


Part No. Shown:KT-002GQ-A13

KT  
Keyswitches



Switch Circuit Diagram



Switch Circuit Diagram

